



The Seattle Garden Club

Member of The Garden Club of America



General Meeting

May 18, 2017 UWBG/CUH

9:30 am Social, 10 am Meeting,
10:30 Program Guests Welcome!

Skagitonians to Preserve Farmland exists to ensure the economic viability of Skagit County agriculture and its required infrastructure through farmland protection, advocacy, research, education, and public awareness.

Executive Director Allen Rozema brings over 19 years of experience to SPF in natural resource management, land use planning, and economic development at the federal, state, city and tribal government level. Join us to hear how Allen and Development Director Linda Tyler support this important organization.

Events at a Glance

5/1	Provisional Meeting, 9:00 am, CUH SGC Hort Meeting/Hort Share, 9:15 am - 11:30, CUH (bring coffee cups)
5/4	SGC Board Meeting, 10:00 am - 11:30 am, Sunset Club
5/9	Policy and Planning Meeting, 1:00 pm - 2:30 pm, Diana Neely's home
5/10	Bloedel Tour (auction event), 8:45 am - 3:50 pm, Bainbridge Island
5/11	Chase Garden Tour (auction event), Charlee Reed, time TBD
5/18	SGC General Meeting, 9:30 am - 11:30 am, CUH (bring coffee cups)
5/22	SCG Photography Committee Meeting, 10:00 am - noon, Suzy Titcomb's home
5/23	North Corridor Tour (auction event), 7:00 am - 4:30 pm, Barbie Snapp Conservation Field Trip (auction event), 7:30 am - 4:00 pm, Barbie Snapp
5/24	Provisionals Skagit Valley Tour (auction event), 7:30 am - 4:30 pm, Susan Potts

For More SGC Information:

www.seattlegardenclub.org



From the President

Rain or shine, what a glorious time of year in our gardens! Our northwest climate provides a parade of blooming shrubs and trees--camellias, plums, pears, cherries, magnolias, crabapples and rhododendrons putting on a show.

Even in the gloomiest of seasons, our members find delightful specimens from their gardens for Hort Share each month, but during the spring months, we rock! April's display was glorious, and May promises to be no less so.

We had an event filled April Hort meeting, starting with Ana Hergert's informative talk on modes of plant pollination other than the birds and the bees. Nicely done, Ana! Thanks to Diana Neely for leading us through this year's changes in SGC Policies as well as the membership vote on two Bylaw changes, one related to Inactive Membership and the second to dues collection. Shelley Rolfe and Megan Smith filled in for Community Projects, Chair Margi Alison, to elicit membership approval for two projects: \$3500 for a garden program at Islandwood and \$30,000 for the Waterfront Evergreen Passage. In response to questions about the Evergreen Passage Margi has followed up with an article in this newsletter.

The Pacific Bonsai Museum, the site for our April joint meeting with Tacoma Garden Club, describes itself as a "hidden treasure that celebrates bonsai as a fine art." Members who attended this special meeting and luncheon will likely agree that we should spread the word to bring this gem out of hiding. Our visit coincided with the exhibit "Natives," a pairing of large-scale American landscapes by artist Luna Tinta with bonsai indigenous to the region. If you missed the meeting, it's worth a visit. Many thanks go to Sheila Noonan and the Meeting Arrangements committee for putting together this fun event for both clubs.

As I write this letter, I am looking forward to SGC's Centennial Gala on the MV Skansonia, a setting reminiscent of our history. I received an email from Terry McManus of the Ridgefield Garden Club and also a member of the GCA Archives Committee and Library Committee. Their club recently digitized several 16mm films from their club archives including the 1930 GCA Annual Meeting hosted by Seattle Garden Club. Terry posted these videos unlisted on YouTube for us to view and Kim also has a link on our Website:

[GCA YouTube](#)

Among the highlights you won't want to miss:

--- The famous transformed barge that carried members across Lake Washington, and Mrs. Gregg who designed the barge: Video 2 at 5:18 and 6:48 respectively.

---The luncheon at the Seattle home and garden of Mrs. Thomas Simson where, "Two small ponies were harnessed to the diminutive Roman chariots and they raced up and down to the great delight of the visitors": Video 2 at 10:18.

Although this will be a hard act to follow, I am confident our current members can live up to these amazing women—absent the pony races. And now, on to May with Lynn Mowe speaking at our Hort Meeting and a presentation on "Skagitonians for Farmland Preservation" at our General Meeting. I hope to see you there.

Happy Spring!
Jenny



Cathy Parker and Ana Hergert (right) following Ana's Provisional talk



Jo Anne Rosen and Jenny Wyatt Present Noreen Frink with her GCA Photography Judge Emeritus Certificate.



In Memoriam:

We regret the passing of

Honorary Life Member
 Florence (Faunie) Valentine
 SGC Member from 1951 - 2017



**New Payment Due date
 for SGC Dues: June 1st**

Please look for your Dues Payment
 invoice to arrive by email during May
 Active & Provisional Dues & Fees

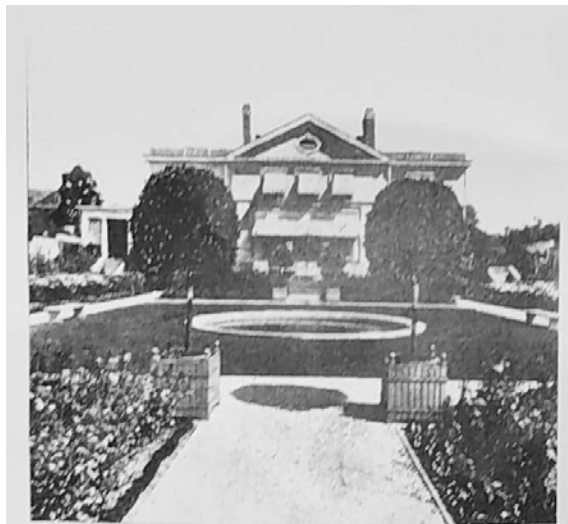
**For SGC Fiscal Year: June 1,2017 –
 May31,2018**

Membership Dues	\$230
Meeting Arrangements Fee	\$145
Total	<u>\$375</u>

Centennial Tour of Founder's Gardens



E.J. Garrett



R.D. Merrill

Save the Date! Thursday **May 25**, 10:00-2:00

The Centennial and Visiting Gardens Committees are hosting an Open Gardens Day on May 25th for Seattle Garden Club Members and their guests. Four gardens will be featured in this complimentary tour. Three are in The Highlands and one is on Capitol Hill.

The tour will involve walking, so sturdy shoes are recommended. Parking will be provided in designated areas near the gardens. Shuttles will be provided although walking is recommended.

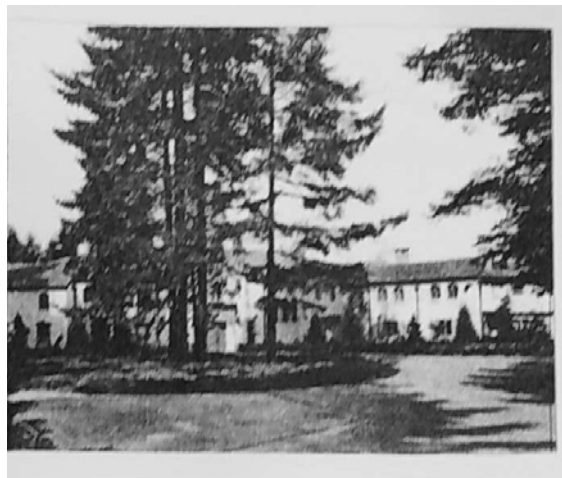
Please RSVP to laurieriley@gmail.com

Addresses, driving and parking directions will be provided by e-blast in mid May

Questions? Contact Laurie Riley, Burnley Snyder or Eliza Davidson.



M.F. Backus



P.M. Henry

GCA News

The Centennial Tree Project Update from the March edition of *The Real Dirt*

"The Centennial Tree Project was a five-year-long project undertaken by all 200 GCA member clubs in celebration of The Garden Club of America Centennial. Spanning the terms of three Horticulture Chairmen, it started under Linda Paine, continued under Ellen Petersen, and culminated in 2013 under the leadership of Phyllis Lee, with numerous fascinating projects and over 23,000 trees planted across the United States...." Barbara Tuffli, GCA Horticulture Chair
From our very own Catherine Allan (Editor) and Jenny Wyatt (Assistant Editor):

"Requesting updated reports on the Centennial Tree Projects actually began a year ago, under the direction of Editor Tootsie Crutchfield. A few reports trickled in last May with a few more over the summer. However, once a deadline was in place last fall, we were bombarded! The response was so overwhelming that we decided to create a special edition for the updated Centennial Tree Projects, five years after the original reports in 2013. Phyllis Lee, Horticulture Committee Chairman at that time along with her Horticulture Committee compiled a leather-bound book that remains at Headquarters with reports from all two hundred clubs. It has been an interesting study reading each one, to see the incredible growth in some, tornado damage in one, death by neglect in others, deer demolished trees in several areas; yet the positive impact on human involvement as well as the return of pollinators resulted in many cases. Updates were even submitted as Hurricane Mathew wreaked havoc in the Southeast last fall! Mother Nature prevails!

The significance of the Centennial Tree Project has undoubtedly made an enormous impact throughout the country since its inception. This successful effort fulfilled the mission of the Garden Club of America: to preserve America's beauty and natural heritage for future generations through environmental education; to protect endangered species; to promote biodiversity and to encourage the responsible use of our public lands for the benefit of all citizens through civic improvement. We are proud to be part of this all-encompassing project, one club at a time.

Angela Overy's work continues to inspire us in this special edition. Her Centennial Map of all the tree projects graces the cover. The images selected for this issue are to give the reader an appreciation of the detail in Angela's work. We are truly grateful for Barbara's expertise in adding these special touches throughout this issue."

Check out March's Centennial Tree special edition of *The Real Dirt*!

Eve Rickenbaker, GCA News

Hort Report

Our March Hort meeting will take place on Monday May 1, 2017 at CUH. **9:15 am Social & Hort Share & 10:00 am Program.** Provisional Lynn Mowe will deliver her presentation *Habitat Restoration Projects in Washington State*.

Hort Share: We will all have something blooming in our gardens in May. Please bring a specimen (in a vase) to share from your garden. Thank you Betty Paul & Laurie Riley for organizing Hort Share!

Diana Ackerley, Horticulture Chair

Please join the Fragrance Garden work party immediately following the Hort Meeting on May 1

Photography Report

March 20th - nine women (16 photos) participated in the March "Practice" photo opportunity to have their favorite photo looked at by SGC judges. These photos were reviewed and each person was given both positive and constructive comments (as would happen in a GCA show) as well as personal comments to encourage them to participate in GCA photo shows. This session was considered very informative and has been requested for next year.

April 10th-The photography committee met at the Graham Visitor Center to take photos of the cherry blossoms.

May 22nd-Wrap up meeting at Suzy Titcomb's (10 am - 12 noon) to answer photography questions and get motivated to take photos this summer.

Exciting News for March 2018- The Seattle Garden Club will be displaying a photography show in the Miller Library at CUH for the month of March 2018. We will be hosting an opening party on March 1st for friends, family and members. More details to follow.

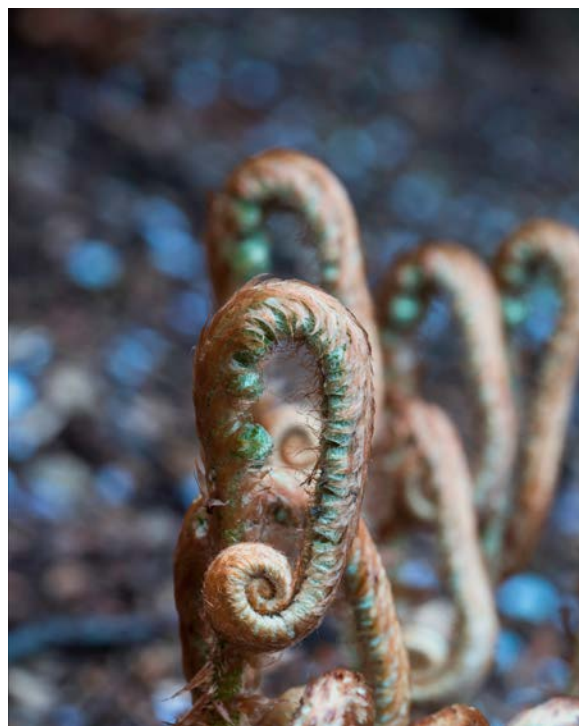
Suzy Titcomb, Photography Chair



Suzy Titcomb



(back row) Suzette de Turenne, Debby Smith, Charlee Reed, Cathy Parker, Sue Brickman, (front row) Jo Anne Rosen, Suzy Titcomb, Jeannie Gravenkemper, braved the weather while photographing in the Arboretum



Fern soldiers by Peggy-Paige Most

Conservation Report

With the renewed energy of Spring, I have spent this last month gathering information and activities to share with you. I hope you will find the time to peruse these links below to enjoy and learn more about the natural world around us.

First off, due to our extremely full SGC calendar, the Loop Biosolids tour in Woodinville has been postponed until the Fall (probably early October). We have a lot of interest in this tour and I look forward to finding a new date so we can learn about this ultimate recycling experience.

I was thrilled to see our speaker, Dr. Dennis Paulson, and guests from BirdNote last month! As you learned, BirdNote is a two-minute radio show that combines rich sounds with engaging stories to illustrate the amazing lives of birds and give listeners a momentary respite from the news of the day. When I remember, I tune my radio to KPLU/Seattle/Tacoma 88.5 Monday-Friday at 8:58am, and Saturday-Sunday at 9:30am. You can also go to their website, <http://birdnote.org>, to hear the day's story, explore their archives, listen to podcasts, or just have fun exploring BirdNote.

In keeping with the bird theme, I do want to suggest that you resist using all pesticides and consider becoming a Certified Wildlife Habitat through the National Wildlife Federation: <http://nwf.org/Garden-For-Wildlife.aspx>.

Though the reasons for avoiding pesticides are numerous, the one that I can attest to each Spring has to do with the dear hummingbirds who use spider webbing in their nests. I watch "my" little hummingbirds darting up and down outside my kitchen window collecting spider webs that would not be there if I sprayed my house and yard with pesticides. This truly gives a visual example to the web of life!

Another activity to consider when creating habitats is an Insect Hotel! This was something I hadn't known about until this week and I thought it looked very interesting...
[Insect Hotel](#) .

Susan Potts invited me to lunch with Ashley Ahearn, a KUOW Environmental Reporter, to discuss future plans and to hear about her new podcast series that starts on May 2. Ashley is very excited to have 25 minutes to more fully develop and share her stories on environmental issues. I encourage you to listen to Ashley's podcasts on KUOW. Here is one of Ashley's podcasts from last August: <http://www.npr.org/2015/08/03/428151677/npr-one-exclusive-this-land-environment-podcast>. Consider listening to **Earthfix** (<http://kuow.org/term/earthfix>) and **Living on Earth** (<http://www.loe.org>), to keep current on environmental challenges and changes that affect us all.

I also wanted to bring to your attention an article concerning wind farms that are being temporarily shut down in parts of Washington and Oregon. For more information, read the following article: [Stopping Wind Farm](#)

I purchased the book, [The Street-Smart Naturalist: Field Notes From Seattle](#), by David B. Williams after attending the Centennial luncheon of the Ballard Locks last Fall with Hope Stroble and Debby Smith. If you love Seattle and its history, then I suggest this book for your reading pleasure.

And lastly, we still have space available for our Great Northern Corridor tour on May 23. This is an all day tour with lunch at the Cascadia Inn in Skykomish. The price is \$75.00 per person. Call Barbie if you are interested in joining us on this fabulous adventure.

Barbie Snapp, Conservation Chair, who continues to ask you to **stay active in protecting our environment!**

Ways & Means Report

Please! CHECK YOUR CALENDARS! Don't miss out!!

There are still spaces remaining for you to have fun with other SGC members and support our Holiday auction fundraising for SGC projects!

May 10- Trip to Bloedel Reserve with Tour, Lunch and Floral Design demonstration. 8:45 am ferry to Bainbridge. \$100

May 11- Tour the spectacular Chase Garden with Lunch \$75

May 23- Enjoy spectacular mountain scenery on the Northern Corridor Tour with transportation, lunch and guided tour for just \$75!
7:30 am – 4:30 pm

June 9- Visit the special Old Goat Farm garden and nursery tour \$65

***And please sign up for the fabulous cocktail party hosted by the SGC Board on September 30th from 5:30 pm - 7:30 pm at the enchanting Bloedel reserve! Tour, beverages, food, fun and more!

Contact Edie Tenneson at EdieSS48@msn.com or 425-444-2149

On Grafting

If the fresh trunk have sap enough to give
that each insertive branch may live;

the gardener grafts not only apples there,
but adds the warden and the pear.

The peach and apricot together grow,
the cherry and the damson too,
till he hath made by skillful husbandry
an entire orchard of one tree.

So lest our paradise perfection want,
we may as well inoculate as plant.

Thomas Randolph

Recently, NBBJ, a leading national architectural firm, made an “out of the blue” donation to the Seattle Garden Club.

Now for the “back story”: Scott Wyatt, Jenny's husband, recently retired from his role as NBBJ's Managing Partner.

Scott's partners wanted to honor Scott's years of excellent service. They considered various horticultural organizations and ultimately chose to honor Scott by honoring Jenny and SGC: *all in the family!*

Thank you NBBJ.
Carlyn Steiner, Treasurer

Gardener's Corner

Shoulda, Woulda, Coulda...Still Can!

by Megan Smith

I've been desperately trying to do a garden spring clean up, but my endeavors have often been dashed by the weather. Fits and starts, that seems to be the pattern. I get started and then that dark cloud comes overhead and I'm running for cover. The days where I've been able to get a lot accomplished I've enjoyed "the flow", the ability to get lost in the garden and lose all track of time. Meditation while working is a dream for many. Whilst weeding, digging and trimming, I've had a lot of time to contemplate the garden and what I wish I'd done earlier, would and could have done if I'd taken advantage of every sunbreak and still will accomplish in the days to come. Here's what I came up with:

1. I should've cut ALL my epimedium and hellebore leaves back in late February when all it required was a quick clip. Now I will painstakingly clip last year's leaves one at a time being careful to preserve all fresh foliage or flowers. This means avoiding fleshy epimedium stems and going for the thin brittle ones. If I don't cut back the hellebore leaves I can expect whitefly, sooty mold and more snails...lovely!
2. I should've cut my Berberis 'Concorde' (very compact) and Spirea 'Magic Carpet' back to a foot last month, but better late than never, right?
3. I should've mulched earlier...now I have quite the obstacle course to work around. But, my extensive cleaning to prepare for mulch has exposed garden villains! Numerous snails abound which reminds me...it's time to bait! No more hiding places for these critters.
4. I should've replaced my grasses a long time ago. While laboriously cutting back my Miscanthus sinensis 'Gold Bar', a compact horizontally yellow variegated grass, I've decided I no longer have the raw strength to divide these monster grasses that have slowly become garden thugs. I'll be able to get the same look with the lovely, graceful Calamagrostis acutiflora 'Eldorado' also variegated yellow, which maintains a much narrower habit FOR A LONG TIME. I will always appreciate the grace, movement and verticality of grasses in my garden.
5. I still can weed, weed and weed some more. Today's efforts will pay off later. While pulling the shot weed I always remember to grasp the plants from the bottom ever so delicately or from the top, carefully covering the cluster of seedheads, so I don't end up with a flurry of little hollow green seeds, progeny looking for a new home. With dandelions, it's best to use any of the stand up tools such as the Fiskar's Extended Reach to make sure you get the entire tap root, otherwise you'll have another dandy in a few weeks. Keep in mind, dandelions as well as shot weed or Bittercress are edible. In fact, they're incredibly nutritious. Experience that feeling of retribution and the fruits of your labor by eating your weeds! (Dandelion salad, anyone?)

The wonderful thing about having a garden is that as long as you care, it will always be there for you. It is patient, always giving and constantly teaching. I should've been more attentive earlier in the spring, but my garden is happy to embrace me whenever...now that's true love!



Community Projects Report

The Evergreen Passage Project

The Evergreen Passage is an early project of Friends of Waterfront Seattle designed to transform a much-used, but bare passage, into a vibrant corridor through beautiful horticulture. Friends of Waterfront Seattle is an independent entity formed to work with city government and the community to provide consistent leadership and funding. Richard Hartlage was hired to design the plantings and the Nussbaum Group will provide the landscape construction and organic maintenance services.

The Seattle Garden Club's grant of \$30,000 is part of the overall budget of \$275,000. Friends of Waterfront Seattle has other grant requests out to fund the rest of the work and has had enough success for the plan to continue on the projected timeline. The Seattle Garden Club will receive recognition for the plantings in a sign TBD to be placed on the Passage, as well as a celebratory party in our honor, possibly in September. It is to be noted that the project will be ongoing for several years. The upper concrete wall that will be replaced by iron grillwork will not come down until late 2017/early 2018 and the viaduct removal is in 2019. One artwork on the Passage has been installed, with more to come.

The Seattle Garden Club has a liaison team of Jenny Wyatt, Megan Smith and Margi Allison to work with Richard Hartlage and Friends to identify the best possible plant curations and to facilitate communication between the many stakeholders.

The latest Project Timeline for Seattle Garden Club:

April 17th: the liaison team meets with Richard Hartlage and Friends to review plant selections

April-June: Evergreen Passage work plan goes into action, including finalizing and purchasing plants, permitting and installation.

Margi Allison, Community Projects Chair



Fragrance Garden Report

Stop by the CUH Fragrance Garden to see Camellia x 'High Fragrance'. Photos by Catherine Allan



June I Club Horticulture and Flower Show

June is fast approaching with the anticipation of our year-end luncheon and horticulture flower show.

The show has only three classes:

- 1) **Azalea Class** for six members who have already registered. The container should be 14" (as stated), from inside rim to inside rim across the top of the container.
- 2) **Hypertufa Class** with alpine or native plants. There are two sub-classes: A = a container with one plant; B = more than one plant in the container. Members have already registered.
- 3) **Baird Board Class** has two sub-classes: A = less than 6" tall; B = less than 12" tall. Will have a sign-up sheet at May Hort meeting for classes after a demonstration.

Guidelines:

- Entries for all three classes must include a key card with the entry card. Key cards describe the growing conditions of the plants. Laminated photographs are permitted on 4 x 6 cards.
- All entry cards must include written botanical and common names.
- Containers in Classes 1 and 2 must not exceed the 14" limit requirement. They must be measured at the diameter or diagonal inside the rim at the soil line.
- Designate the back of the container with an X so that the staging committee can place them properly.
- Terra cotta pots are the preferred containers for Class 1. Class 2, the hypertufa containers are required. Top dressing must not float when watered. If using moss, it will not be counted as a second plant. Class 3: Baird Boards have their own special display.
- Scale of points for Class 1, azaleas is based on cultural perfection (40), staging and arrangement (30), grooming (10), distinction (10), color effect (5) and suitable labeling (5).
- Scale of points for Class 2, troughs or hypertufas is based on the compatibility of plants, scale of plants in container and for horticultural excellence, 85 pts. Artistic merit earns 15 pts.
- Scale of points for cut flowers collections (Baird Boards) is based on cultural perfection (50), variety (35), distinction (10) and suitable labeling (5).
- All plants must not be on the endangered, threatened or locally invasive websites. Please consult: www.pnw-ipc.org; www.nature.org; www.tnc.org or www.plants@usda.gov

These classes will be judged in preparation for our GCA Flower Show in the spring of 2019. Questions, please contact Catherine Allan: jardinsroyaux@gmail.com

Timetable for Exhibitors in Horticulture:

Thursday June 1, 2017:

7:30 am	Horticulture entries will be accepted and passed
8:30 am	Passing of horticulture entries ends
8:30 am	Clerks' briefing
8:45 am	Judges' briefing
9:00 am	Judging begins
11:00 am	Show opens to members



Looking Ahead

- 6/1 SGC Annual Meeting and Luncheon, 11:00 am - 1 pm, Seattle Tennis Club
Payment Date for 2017-2018 Dues
- 6/2 Bridge and Tea Party (auction event), 1:30 pm - 4:00 pm, Delphine Stevens' home
- 6/8 SGC In and Out Board Meeting, 10:00 am - 1:00 pm, Sunset Club
- 6/9 Old Goat Farm Tour (auction event), 10:00 am - 3:00 pm, Suzette De Turenne
- 6/14 Wind Cliff Tour (auction event), 11:00 am - 2:00 pm, Roxanne Wiley
- 6/20 - 6/22 Lopez Trip (auction event), Suzette de Turenne and Kathy Lea

GCA Encourages Use of Email

If you receive this newsletter via U.S. Mail and would like to receive it via email, please contact me.

Please help us reduce waste and expenses.

Thank you!

Susan Brickman, Communications Chair
susanbrickman@msn.com

The Seattle Garden Club is a Member of
The Garden Club of America



THE GARDEN CLUB of AMERICA



Seattle Garden Club

University of Washington Botanic Gardens

Box 354115

Seattle, WA 98195-4115