

April 2017



# The Seattle Garden Club

Member of The Garden Club of America

## Tour of PBM exhibit "Natives"

Celebrating North American trees

Seattle/Tacoma Garden Club Joint General Meeting  
Thursday, April 20, 10:00 am Social, 10:15 am Program followed by a box lunch

Pacific Bonsai Museum

2515 S. 336th St.

Federal Way, WA 98003

253-353-7345

Guests are Welcome!

PLEASE RSVP - YES OR NO by Friday, April 14th to Sheila Noonan

\*\*\*Carpooling is encouraged\*\*\*

Non-subscribers to the Hostess Fund: Please confirm your reservation by sending a \$35 check payable to SGC to Sheila Noonan:

[sbnoonan@gmail.com](mailto:sbnoonan@gmail.com)

624 35th Avenue

Seattle, WA 98122

206-860-7662

Join Curator Aarin Packard for a tour of PBM's 2017 exhibit *Natives*. *Natives* celebrates the diversity of North American trees and the unique terrains that shape them. American landscapes, painted by contemporary artist [luna Tinta](#), will be showcased alongside native bonsai, creating a vista that imparts the richness, diversity, and beauty of American bonsai and the environments that shaped them.

## Events at a Glance

- |      |  |
|------|--|
| 4/2  | Highlands Chapel Concert and Dinner (auction item), 5:00 pm  |
| 4/3  | Provisional Meeting, 9:00 am, CUH<br>Hort Meeting/Hort Share, 9:15 am - 11:30, CUH<br>Fragrance Garden Work Party, 11:30 am - 1:30 pm, CUH |
| 4/4  | Policy and Planning Meeting, 1:00 pm - 2:30 pm, Diana Neely's home   |
| 4/5  | Bunco Party (auction item), 5:00 pm - 9:00 pm, Susan Ragen's   |
| 4/6  | SGC Board Meeting, 10:00 am - 11:30 am, Sunset Club  |
| 4/10 | Photography Committee (photos of cherry blossoms), 10:00 am - noon, UW   |
| 4/19 | Wetherwill Work Party, 9:30 am - 12:30 pm, Wetherwill Preserve, Bellevue   |
| 4/20 | SGC Tacoma Joint General Meeting, 10:00 am - 1:00 pm, Federal Way  |
| 4/27 | <b>Centennial Gala, time 6:00 PM, North Lake Union</b>   |

## From the President



March proved true to form, coming “in like a lion.” After rain, snow and bitter cold, we eagerly await the turn of the weather predicted in the proverb and a month going “out like a lamb.” Welcome April—no fooling!

Thank you to Eliza Davidson for her highly informative provisional talk on “Pollinator Plants and Garden Design” at the March Hort meeting. Kudos go to Program Chair Sue Ashmun for the ongoing line-up of top-notch speakers at our General Meetings. What a treat to have Dennis Paulson, Science Advisor and Writer for “Bird Note,” herald in the spring at our March General Meeting with his talk on “Building a Garden Paradise for Birds and People.”

Our Centennial Committee continues to bring SGC’s history to life with a series of digital presentations. Our March General Meeting featured an extraordinary presentation and map of “Community Projects Then and Now.” Many thanks to Sue Blethen, who took the lead with this project; Christine Davis, archive master; and Kim Bishop, map platform technician and slideshow producer. Kim has posted all of our Centennial presentations on our SGC Website. Do check them out!

Our heads may start to spin with the pace of April’s activities. First up at our April 3<sup>rd</sup> Hort meeting will be a talk on plant pollination by Provisional Ana Hergert, “It’s Not Just About the Birds and the Bees.” Following Ana’s talk will be two important items of business (see details in this newsletter). Diana Neely, Policy and Planning Chair, will present Policy changes aimed at improving our event planning and two Bylaw changes, the first related to Inactive Members and the second to dues collection. The Board has passed both the Policy changes, which do not require membership approval, and the Bylaw changes, which do. Please familiarize yourself with all changes and bring any questions you have to the meeting.

The second item of business at our April Hort meeting will be a membership vote on funding this year’s proposed Community Projects. Community Projects Chair Margi Alison and her committee have exercised due diligence in investigating our grant proposals. Again, please review the information provided so that you can make an informed vote.

We continue the tradition of holding a joint meeting and luncheon with Tacoma Garden Club at April’s General Meeting on April 20. This year, Seattle will be the host at the Pacific Bonsai Museum in Federal Way. I was impressed to read on the Museum’s website that they have “the most diverse public collection in North America.” Also of note, we will have a special visitor at our joint meeting, Zone XII Chairman Lindsay Dodge. I know that you’ll enjoy meeting her! Please introduce yourself to Lindsay, and don’t forget to RSVP to Sheila Noonan, who needs a firm head count for the luncheon.

We round out the month with our Centennial Gala on Thursday April 27. The MV Skanson, a retired, historic ferry boat permanently docked on Lake Union, will provide the perfect setting for celebrating SGC’s 100 years. Marilee Ahalt and Barbara Feasey have been planning this party for us for many months. Don’t hesitate—RSVP right away for this fun event. It will be fabulous!

Happy Spring,  
Jenny



Liza Davidson (center) following her Provisional Talk with sponsors Jenny Wyatt and Diana Neely

(Untitled)

Now I see the secret  
of the making of the best  
persons. It is to grow  
in the open air, and to eat  
and sleep with the earth.

Walt Whitman

**Join the Fun!  
for the SGC Centennial Gala  
April 27, 2017  
6:00 pm**

**On the permanently moored MV Skansonia (north end of Lake Union)**

Look for your Paperless Post Evite

Please RSVP and send your payment of \$150 or \$250 (Angel Donation)  
per attendee to Sheila Noonan, [sbnoonan@gmail.com](mailto:sbnoonan@gmail.com),  
206 860 7662

Marilee Ahalt and Barbara Feasey, Gala Co-chairs



Edgeworthia chrysantha



Early spring in the Fragrance Garden





# Ways and Means

Please! CHECK YOUR CALENDARS! There are still spaces remaining for some of our Holiday auction events! Help support SGC and have a great time doing it! Don't miss out. Here are the ones with space remaining:

- May 10-* Trip to Bloedel with Tour, Lunch and Floral design demonstration. 8:45 ferry to Bainbridge. \$100
- May 11-* Tour the spectacular Chase Garden with Lunch \$75
- May 23-* Northern Corridor Tour- 7:30 am – 4:30 pm \$75
- June 9-* Old Goat Farm garden and nursery tour \$65 (Two spaces)
- Sept. 30-* The SGC Board Cocktail Party at the Bloedel Reserve with guided tours. 5:30-7:30 \$75 (spouses welcome!)

Contact Edie Tenneson at [EdieSS48@msn.com](mailto:EdieSS48@msn.com) or 425-444-2149

## Garden History and Design Books

Order back issues of our SGC Garden History books before April 1, 2017. We made three: 2010, 2012, and 2014 by using My Publisher software. This company is going out of business. We will be using another company for our 2017 GH book to be presented at the annual meeting on June 1<sup>st</sup>. The cost of each previously published book will be between \$30.00 and \$35.00. I will collect upon delivery. Contact me before **April 1, 2017** if you want a copy of any of the three pictured here.



Mary Turner  
206 920 1779  
[mturner915@aol.com](mailto:mturner915@aol.com)



Camellia miniata ake bono in the CUH Fragrance Garden

## **Annual Dues:\*NEW PAYMENT DATE\***

2017-2018 SGC Annual dues will be due on **June 1, 2017**

The SGC Governing Board has simplified the dues collecting method! Based on the experiences of several Zone XII and GCA chapters, by adopting June 1<sup>st</sup> as our dues payment deadline, we will avoid trying to collect dues during the summer months and will receive our income at the beginning of our fiscal year.

### **GCA News**



### **Spring 2017 – ConWatch**

If you are interested in environmental regulations, check out the recent edition of *ConWatch (Spring 2017)* on pages 44-47 by Suzanne Booker-Canfield, Ph.D. Vice Chair, Legislation and Policy Garden Guild of Winnetka, Zone XI. The following paragraph is the introduction to the article.

#### **Environmental Regulations: What They Are and Why They Matter**

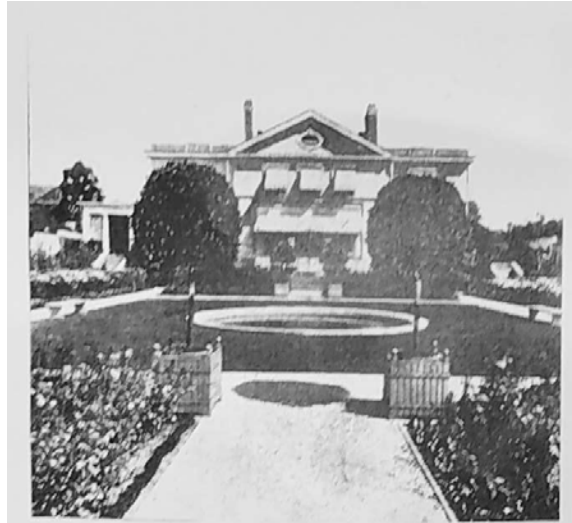
“The 115th Congress is working to strip the existing environmental safeguards that have been established over multiple administrations—both Democratic and Republican. Federal rules that regulate air, water, greenhouse gas emissions, and other public health issues are necessary to implement existing laws. These rules are the products of a lengthy rule making process that incorporates public input and peer-reviewed science. Currently at risk are environmental regulations that were finalized after June 2016. These are being targeted for nullification by the Congressional Review Act (CRA). There are 60 “session” days (days that Congress is in legislative session) in which Congress may use expedited rules to nullify a regulation through the CRA. If that happens, then President Trump would likely sign that resolution into law. Under this scenario, the federal agency that issued the rule is prevented from issuing a substantially similar rule again. Congress has already voted to nullify the Stream Protection Rule, a vital rule that protects citizens from having toxic mining waste dumped in their water supply. More CRA attacks are imminent. These CRA actions are swift and permanent, and they could be used to dismantle a broad range of environmental protections. These efforts are underway, and many are likely to occur very quickly. What You Can Do: If you support federal environmental regulation, a cornerstone of environmental protection in America, you can call and/or write your legislators asking them to oppose any effort to use the Congressional Review Act to repeal existing environmental regulations. These actions are swift and permanent, and they could be used to dismantle a broad range of environmental protections.”

Eve Rickenbaker, GCA News

## Centennial Tour of Founder's Gardens



E.J. Garrett



R.D. Merrill

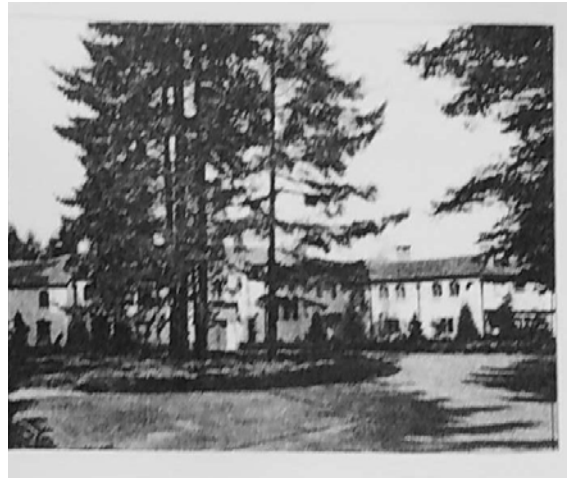
**Save the Date! Thursday May 25, 10:00-2:00**

The Centennial and Visiting Gardens Committees are hosting an Open Gardens Day on May 25th for Seattle Garden Club Members and their guests. Four gardens will be featured in this complimentary tour. Three are in The Highlands and one is on Capitol Hill.

Please mark your calendars and stay tuned for additional details.  
Questions? Contact Laurie Riley, Burnley Snyder or Eliza Davidson.



M.F. Backus



P.M. Henry

# Policy and Planning

The following are Bylaw changes which must be voted on by the membership on April 3, 2017. These changes have been approved by the Board. Please come and vote at the April 3 meeting!

## ARTICLE III MEMBERSHIP

Section 8. Inactive Membership.

8.3 Dues and Fees. An inactive Member shall pay no annual dues to either SGC or GCA, ~~and shall not enjoy the privileges of SGC or GCA.~~ If attending an SGC event, the SGC Inactive Members shall pay the required fee of the event

### WITHOUT STRIKEOUTS AND ITALICS

An Inactive Member shall pay no annual dues to either SGC or to GCA. If attending an SGC event, the SGC Inactive Member shall pay the required fee of the event.

## ARTICLE IX

### FEES, DUES, FISCAL YEAR AND BUDGET

Section 1. Initiation Fees and Acceptance Fees. Initiation fees for Provisional members and Acceptance fees for Active members shall be determined by the Governing Board.

Section 2. Annual Dues. All dues shall be determined by the Governing Board and shall be payable annually in advance of July 1. Any Member who is delinquent in the payment of dues on August 1 shall receive a notice by certified mail, return receipt requested. If such dues are not paid by September 1, membership shall be forfeited.

### PROPOSED REVISIONS TO BYLAW, BELOW

Section 2. Annual Dues. The amount of SGC annual dues ~~All dues~~ shall be determined by the Governing Board and shall be payable ~~annually in advance on July 1,~~ on June 1st or in-person at the Annual Meeting. Any Member who is delinquent in the payment of dues on ~~August 1~~ July 1st ~~shall receive a notice by certified mail, return receipt requested~~ shall be notified by the Treasurer. If such dues are not paid by ~~September 1,~~ August 1st, ~~membership shall be forfeited~~ the Treasurer shall forward her name to the Chairman of Membership for further consideration.

### REVISED BYLAW WITHOUT STRIKEOUTS OR ITALICS, BELOW

Section 2. Annual Dues. The amount of SGC annual dues shall be determined by the Governing Board and shall be payable on June 1st or in-person at the Annual Meeting. Any Member who is delinquent in the payment of dues on July 1st, shall be notified by the Treasurer. If such dues are not paid by August 1st, the Treasurer shall forward her name to the Chairman of Membership for further consideration.

continued next page

## Policy and Planning Report continued

The following Policy was proposed by the Policy and Planning Committee and approved by the Board in March. This Policy is to help communication between persons planning events for the club.

The Policy and Planning Committee shall maintain a three-to-five-year Events Calendar, subject to Board approval. The Calendar shall be posted on the SGC Website and in the Yearbook.

SGC shall rotate key events on a yearly basis, including but not limited to The Pamela Green Speaker, The Iris Wagner Conservation Lecture and GCA Flower Shows.

SGC shall endeavor to hold a GCA Flower Show to include the Floral Design, Horticulture, Photography and Conservation Divisions as frequently as every three years. Separate divisions are encouraged to hold judged Club Shows in non-GCA Flower Show years.

A division may hold a Club Show separately or in concert with another division at monthly SGC meetings or luncheons. The SGC Judging Chair shall coordinate Club Shows with the Advisor of the respective division and shall send any request to hold calendar a Club Show to Policy and Planning for consideration.

Diana Neely, Policy and Planning and President Elect

## Community Projects Report

It is with pleasure that the Community Projects Committee recommended to the Board the approval of two projects for 2017:

**Islandwood** Garden Program to support their experiential, outdoor program \$3500

The Waterfront **Evergreen Passage** to support the landscaping, plants and planting of the Evergreen Passage corridor connecting the Waterfront Park to downtown \$30,000

These two projects have been approved by the Board. Both projects, because they exceed the \$2500 limit below which no membership approval is needed, will be presented to the membership on *April 3<sup>rd</sup>* at the Horticulture meeting. The Finance Committee will make recommendations after their Finance Committee Meeting on March 31<sup>st</sup> about funding schedules.

Margi Allison, Community Projects Chair



# February Business Meeting Report

Below are the suggestions that were generated at the February business meeting for Founder's Fund Projects and Wagner Lectures. We will be having a Wagner Lecture next year! If you have further suggestions or are interested in working on either one, please email Diana at [diana\\_neely@msn.com](mailto:diana_neely@msn.com). If you haven't sent in your survey please do it ASAP as the deadline is **April 1**. Mail is fine or fill it out on the website. Thank you to all who did email it this year!

## SUGGESTIONS FOR DEVELOPING A NOMINEE FOR GCA FOUNDER'S FUND:

- Long-term plan should be developed to map out steps; winning projects typically are many years in the making
- Important to identify leader early on; many want to work on a committee, but we need the commitment of a Chair
- Most benefit to community
- Downtown Seattle as focus area: perhaps planting trees
- Project that contributes to Waterfront Program, including Centennial project nominees
- Project with focus on children including Children's Playgarden, Rainier Valley Urban Farm
- Project which benefits under-served populations and supports a multi-generational community
- Project with children as component vs. this topic is potentially over-emphasized; Islandwood
- New project from the Arboretum, where SGC has its longest history vs. let's move on to new focus beyond the Arboretum
- Interactive garden
- Seattle Children's Hospital U.WA project – shovel ready
- Waterfront salmon habitat project
- Carl English Botanical Garden at the Chittenden Locks
- Lake to Bay grove of trees or endangered plants along a pathway
- Expansion of Montlake Cut project incorporating redesign of freeway and use of former MOHAI site
- The Fragrance Garden-with pollinators and children
- Rainier Beach Urban Farms
- To correct the water quality of the water going into the pond near our Centennial Garden.involve schools

## POTENTIAL CONSERVATION TOPICS FOR FUTURE WAGNER LECTURE

- Garden design for lower water use
- Adapting our gardens for lower water consumption
- Design of grey water systems for garden water gardening-relate to pond near our Centennial Project.
- Speaker highlighting benefits of National Parks; excellent speaker once presented at GCA Annual Meeting
- Mount Vernon WSU Research Center speaker
- Speaker on topic of salmon habitat restoration and benefits of removal of dams
- Rain gardens used to prevent run-off into Sound and lakes
- Piet Oudolf – garden designer from Holland
- Phil Levin –UW Professor of Marine Science/Nature Conservancy Lead Scientist

Diana Neely, Policy and Planning Chair and President Elect

# Conservation Report

First of all, I want to thank the Seattle Garden Club for sending Shelley Rolfe and myself to NAL! It was a fantastic and educational meeting full of the energy of 300 GCA members actively fighting for our environment. The speakers were outstanding and very sobering as we heard about ramifications of climate change, policy and specific Bills, Rules and Acts that need our attention. As you can imagine, fighting for or retaining environmental protections will be a very difficult challenge under this current administration. It was stressed that we focus on the problems, not the tweets, emotions and anger BUT THE PROBLEMS and stay active. The GCA notes can be found on the GCA website. Sign in and go to MY PAGES, then click National Affairs and Legislation and lastly click on LIVE FROM DC IT'S NAL! You will get a complete overview of how Shelley and I spent our time in DC.

Part of our responsibilities were meeting with our Washington State politicians. We met with Senators Patty Murray and Maria Cantwell and State Representatives Adam Smith and Derek Kilmer. Over the course of our conversations we learned that some conservation groups may challenge this administration's environmental cuts in court. Two such organization are Natural Resource Defense Council (NRDC) or the Sierra Club which have been successful in the courts in the past. It was stated on more than one occasion that the judicial system might be the best method of slowing or stopping the erosion of our environmental protections.

Shelley and I will have more information posted onto the SGC Conservation website by the end of March. Please feel free to ask us any questions about our time at NAL.

At the March Hort meeting, Dabney announced and passed around a sign-up sheet to see if there was interest in touring the Brightwater biosolids plant in Woodinville. There was a great response! At the time of this printing, I will hopefully have a date that will work for most. I personally will have lunch and a stop at Molbak's after the tour. Guests and children 9 and over are welcome and encouraged. Please let me know if you would like to join us at: [Araby1957@aol.com](mailto:Araby1957@aol.com)

Sis Woodside will be leading the Wetherill Earth Day event in Bellevue which will be held on the morning of Wednesday, April 19th. Bring your own tools to this day of weeding which includes a wonderful pot luck lunch. Timing is roughly from 9:30am to 12:30pm. Please let Sis know if you didn't already sign up and would like to participate in this fun and bonding event! Please RSVP to Sis at: [siswoodside@gmail.com](mailto:siswoodside@gmail.com) Information about Wetherill: <http://www.wetherillnp.org>

Despite the challenges we are facing, and they are considerable, your Conservation Committee remains active in providing you with many opportunities for action, education and experiences! I hope you will join our activities over these last months of our SGC year!

Respectfully submitted,

Barbie Snapp

## Fragrance Garden Work Party Rescheduled



Thank you Fragrance Garden  
Weeders!

Ana Hergert  
Charlee Reed  
Sue Blethen  
Catherine Allan  
& Diana Neely

**April 3<sup>rd</sup>** is the next opportunity to 'get down and dirty' in the Fragrance Garden! We'll meet after Ana Hergert's talk at the Hort meeting at 11:30 a.m. Hotie and I will provide snacks and drinks while you bring your energy and enthusiasm to conquer those nasty weeds! Bring your tools! Many hands make for light work! See you there!

Catherine Allan

## Hort Report

Our April Hort meeting will take place on Monday April 3, 2017 at CUH. **9:15 am Social & Hort Share & 10:00 am Program.** Provisional Ana Hergert will deliver her presentation *It's Not Just About the Birds and the Bees*.

**Hort Share:** We will all have something blooming in our gardens in April. Please bring a specimen (in a vase) to share from your garden. Thank you Betty Paul & Laurie Riley for organizing Hort Share!

**Divide fall-blooming perennials and bring starts to share at Hort.**

The best time for dividing established summer and fall-blooming perennials is in spring. The easiest way to divide your fall-blooming perennial is to dig the entire root ball, and then use a digging spade to cut the root mass into sections. If the root ball is too thick to cut with a spade, use an old pruning saw. If the roots are delicate and break up easily, a sharp knife is the best choice. Simply cut the sections into three or four smaller, well-rooted divisions. "<http://media.gardengatemagazine.com/issue/060/dividing-perennials.pdf>"

Diana Ackerley, Horticulture Chair

## Gardener's Corner

### Organic matter...the secret to a luscious garden as well as your inner health

By Megan Smith

It's springtime, the time for renewal and a time to evaluate your garden's health as well as your own inner health. As we whittle through the long to do list of dividing perennials, trimming back the epimediums and hellebores, and weeding, without a doubt, the most important task is mulching the garden. Tending your soil by providing it with the "prebiotics" it needs to feed your soil's bacteria is paramount. Your garden will be more luscious, your veggies more plentiful and life will be better all around!

In the past, many of us thought we could just plant a shrub, throw in some fertilizer and watch it grow. Nature has taught us that yes, it will grow but, since that shrub doesn't have to expend as much energy searching for nutrients, you end up with a compromised root system with less mineral uptake and a decline in nutrient exchange. And, chances increase that we could end up with a sick plant and nobody likes that now, do we?

All plants have a microbiome, just like we humans do. It consists of tiny little microbes that coat the shoots, roots, leaves, fruits and seeds. There happens to be a very special relationship between these microbes and the plant's roots. With a diminished root system brought on by the use of artificial fertilizer, the shrub ends up with less mycorrhizal fungi and beneficial bacterial in the region around the roots called the rhizosphere. It's crucial to have these beneficial microbes present in the soil near the roots as they send an immune like response through pathways allowing the plant to fend off pests and pathogens. And, to feed these beneficial microbes, nature relies on prebiotics, or organic matter.

Herein lies the incredibly symbiotic and beautiful relationship we have with the earth. We humans have a microbiome. It consists of the many micro-organisms that inhabit our body. Our gut microbiome, about five pounds worth, is our own internal garden. Surprisingly, eighty percent of the immune system is associated with the gut and it keeps us healthy, largely depending on what we feed it. Just as soil life breaks down organic material to feed plants, our colon bacteria does the same for us. WE depend on a steady supply of nutrients for our own internal garden; ironically requiring the same nutrient rich soil as our (external) gardens. Simple carbs, much like the "quick fertilizer" mentioned earlier, fuel rapid growth or energy in our case, but undermine long-term good health. It's no wonder that the majority of the bacteria in the soil and the human gut share a common bacterial ancestor...one that specializes in decomposing dead plant matter. Believe it or not, we share some of the same microbes.

So, this spring as you're ordering your compost to enrich your outdoor garden, think about YOUR inner garden. Maybe it's time to mix those ornamentals with edibles... Rainbow chard anyone?



## Photography Report

**Feb. 9th**-Justin Reznick spoke to about 20 women at CUH on how to capture a great photo. He was able to speak to a variety of levels of photographers. We all left feeling we had some new ideas to work on. Notes from the lecture were sent off to the photography committee.

**March**-Eight people (15 photos) have participated in the March "Practice" photo opportunity to have their favorite photo looked at by SGC judges. These photos will be reviewed and each person will be given personal comments to encourage them to participate in GCA photo shows. Comments will be given on March 20th at CUH from 10-12.

**April 10th**-The photography committee will meet at the UW steps of the Quad to take photos of the Cherry Blossoms from 10-12.

**May 22nd**-Wrap up meeting at Suzy Titcomb's (10-12) to answer photography questions and get motivated to take photos this summer.

\*The committee has been encouraged to participate in the GCA online photo contest focusing on the Freeman. This is the first collaboration between the Photography and Horticulture Committees. Go to GCA online then photography, under My Pages and read about it. Why not participate?

Suzy Titcomb, Photography Chair

## Wetherill Nature Preserve Annual Work Party

It's time to gather at Wetherill Nature Preserve at Hunts Point Town Hall for our annual work party. This has been a yearly tradition for 14 years in honor of Marge Wetherill Baird. We'll work for 2 hours and then convene in the Town Hall for a potluck lunch. Please join us on Wednesday, April 19 at 9:30 am.

Sis Woodside [siswoodside@gmail.com](mailto:siswoodside@gmail.com)

# SGC MEMBERSHIP SURVEY 2017

This is your opportunity to give input regarding your club and your participation. Please take the time to fill out both pages. Questions? Contact Diana at 406-559-0112; or [Diana neely@msn.com](mailto:Diana_neely@msn.com)

YOUR NAME: \_\_\_\_\_

Suggestions for speakers, field trips and/or programs:

General Meetings: \_\_\_\_\_ Photography: \_\_\_\_\_  
Horticulture Meetings: \_\_\_\_\_ Conservation: \_\_\_\_\_  
Floral Design: \_\_\_\_\_

Can you suggest a speaker for the Wagner Conservation Lecture?

Would you be willing to share your home for a meeting?

☐ Horticulture Meeting @ 50-60 persons ☐ September Picnic @ 80 persons

Are you interested in serving on the SGC Board or chairing a committee? Yes ☐ No ☐ Maybe ☐

If so, which Board position(s) interest you? See pages 31-36 of our Yearbook.

Is there a Special Committee you would consider chairing? See pages 37-40 of our Yearbook.

Does serving as Club President interest you? Yes ☐ No ☐ Maybe ☐

Does serving as Club Treasurer interest you? Yes ☐ No ☐ Maybe ☐

GCA Zone XII Positions: The GCA has its own process for nominations and selecting committee members. Is there a Zone XII position that interests you? Positions can be reviewed on the GCA website at [gcamerica.org](http://gcamerica.org). Your interest will be passed on to GCA for their records and consideration.

If you are interested in the Judging Program, please contact the current advisors:

SGC Judging Chairman: Mary Turner, 206-325-0270, [mturner915@aol.com](mailto:mturner915@aol.com)  
Floral Design Judging: Jo Anne Rosen, 206-387-3530, [joannerosen@hotmail.com](mailto:joannerosen@hotmail.com)  
Horticulture Judging: Suzette de Turenne, 206-465-9317, [sdeturenne@comcast.net](mailto:sdeturenne@comcast.net)  
Photography Judging: Juliet Romano, 206-679-8757, [julietromano@comcast.net](mailto:julietromano@comcast.net)

The GCA Founders Fund provides a substantial monetary award for an exceptional community project. Do you have any suggestion(s) for a GCA Founders Fund award proposal in our regional area?

Any additional comments or suggestions?

Please review your personal contact information in the Yearbook and note any changes below.

Please direct any change of membership status to Burnley Snyder, 206-364-2720, [lottie7@aol.com](mailto:lottie7@aol.com)

# Standing and Special Committee Signups

Please consult pages 31-41 of our SGC Yearbook  
for a better understanding of these committees.

Active Members & Provisionals are encouraged to serve on two or more committees.

Your Name: \_\_\_\_\_

**STANDING COMMITTEES:** The chair of each Standing Committee serves on the SGC Board.

- ☐ **Club Communications:** This committee oversees the monthly newsletter, the SGC website, and public relations.
- ☐ **Community Projects:** This committee evaluates and funds grant requests from the community at large.
- ☐ **Conservation:** This committee educates the SGC on local, regional and national conservation issues.
- ☐ **Finance:** This committee prepares the annual SGC budget and oversees financial issues.
- ☐ **Floral Design:** This committee provides workshops and practice in all aspects of Floral Design.
- ☐ **Horticulture:** This committee studies horticulture topics and plans our monthly Hort Meetings.
- ☐ **Meeting Arrangements:** This committee oversees all meeting arrangements and locations.
- ☐ **Membership:** This committee considers candidates for SGC membership. Indicate interest only. Committee members will be selected by the President & Membership Chair according to our Bylaws, IV. 3.3, 1.
- ☐ **Nominations:** This committee nominates SGC officers and committee chairs for Board approval. Indicate interest only. Committee members will be selected by the President according to our Bylaws, IV. 3.3, 1.
- ☐ **Photography:** This committee photographs all SGC events and provides workshops to educate members.
- ☐ **Policy and Planning:** This committee reviews the Bylaws and enacts policy changes as needed.
- ☐ **Program:** This committee procures speakers and plans content for SGC General Meetings.
- ☐ **Ways and Means:** This committee oversees the annual Holiday Auction and facilitates fundraising for the SGC.

**SPECIAL COMMITTEES:**

- ☐ **Archives:** This committee oversees the storage of all SGC records.
- ☐ **Awards:** This committee researches and selects recipients for annual SGC and GCA awards.
- ☐ **Fragrance Garden:** This committee helps design and maintain the Fragrance Garden at CUH.
- ☐ **Garden History & Design:** This committee documents the gardens of SGC Members.
- ☐ **Historian:** The SGC Historian maintains and updates the Club's history published in the annual Yearbook.
- ☐ **Scholarship:** This committee provides a link between local universities and the GCA Scholarship Program.
- ☐ **Speaker Endowment Fund:** Iris Wagner 2018 Conservation Lecture. See reference on page P-6 of Yearbook.
- ☐ **Speaker Endowment Fund:** Pam Green 2020 Horticulture Lecture. See reference on page P-5 of Yearbook.
- ☐ **Technology:** This committee maintains the SGC website and advises the club on technical matters.
- ☐ **Visiting Gardens:** This committee hosts visiting GCA members who wish to tour notable gardens in Seattle.

**PLEASE FILL out this form and submit it to Diana Neely at [diana\\_neely@msn.com](mailto:diana_neely@msn.com)  
by April 1.**

## Looking Ahead

5/1	Provisional Meeting, 9:00 am, CUH SGC Hort Meeting/Hort Share, 9:15am - 11:30, CUH (bring coffee cups)
5/4	SGC Board Meeting, 10:00 am - 11:30 am, Sunset Club
5/9	Policy and Planning Meeting, 1:00 pm - 2:30, Diana Neely's home
5/10	Bloedel Tour (auction event), 8:45 am - 3:50 pm, Bainbridge Island
5/11	Chase Garden Tour (auction event), Charlee Reed, time TBD
5/18	SGC General Meeting, 9:30 am - 11:30 am, CUH (bring coffee cups)
5/22	SCG Photography Committee Meeting, 10:00 am - noon, Suzy Titcomb's home
5/23	North Corridor Tour (auction event), 7:00 am - 4:30 pm, Barbie Snapp Conservation Field Trip (auction event), 7:30 am - 4:00 pm, Barbie Snapp
5/24	Provisionals Skagit Valley Tour (auction event), 7:30 am - 4:30 pm, Susan Potts

### GCA Encourages Use of Email

If you receive this newsletter via U.S. Mail and would like to receive it via email, please contact me. Please help us reduce waste and expenses. Thank you!

Susan Brickman, Communications Chair  
[susanbrickman@msn.com](mailto:susanbrickman@msn.com)

### The Seattle Garden Club is a Member of The Garden Club of America



THE GARDEN CLUB of AMERICA



### Seattle Garden Club

University of Washington Botanic Gardens  
Box 354115  
Seattle, WA 98195-4115