

## JANUARY HORT MEETING LOCATION CHANGE!!!

**The January 7th Hort Meeting will be at CUH.**

We will be taking a membership vote on funding a project  
so we are expecting a large turnout.

**Provisional Barbara Feasey will be speaking on Fragrant Trees.**

Coffee will be 9:30 am with meeting starting at 10:00 am

*Everyone who comes to the January 7th Hort Meeting at CUH with a completed crossword puzzle from the SGC December Newsletter with the answers filled in from the online version of the Real Dirt will receive a prize. Directions for finding the Real Dirt online can also be found in your December Newsletter at the bottom of the crossword page. If you need another copy of the crossword puzzle, call or email Diana at [diana\\_neely@msn.com](mailto:diana_neely@msn.com) or 425-455-5070*

**The February 4th Hort Meeting will be at Diana Neely's**

## FROM THE PRESIDENT

Greetings,

Happy New Year! I hope you all had a fun and restful holiday. It was nice to step back from our activities and enjoy families and friends. I tried to unplug from technology for brief periods of time.

In December we enjoyed a wonderful luncheon at The Sunset Club. Our Provisionals created amazing designs for their flower-arranging debuts. Hope Stroble and her Elves put on a "small" auction which was fun and raised over \$13,000. Thank you for your generosity. Northwest Harvest received our donation of \$3,335. Suzanne Ragen magically mapped our table assignments and worked with the Sunset Club to plan the luncheon for a second year.

In January, at our Hort Meeting, we will be discussing and voting on a Community Project brought to us by the Arboretum. In the Spring, the Japanese Garden will be updated with three small buildings to create a Japanese village surrounding a small garden. We have been asked to donate the "Demonstration Garden" at a cost of \$35,000 over two years. You will receive a mailing with information from the Community Projects Committee before the Hort Meeting.

Community Projects also received a proposal from Madrona Woods to provide \$5,000 for native plants for the Madrona Creek Daylighting Project. After a unanimous vote, this was presented to the SGC Board to ratify their decision.

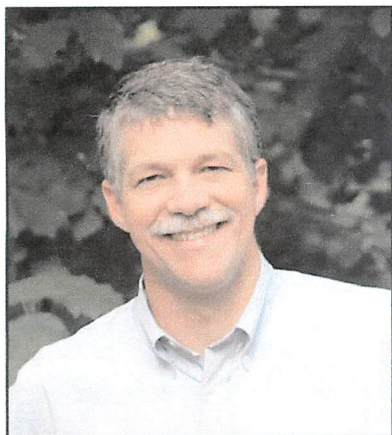
There is no General Meeting this month so be sure to attend the Hort Meeting. In lieu of the GM, each committee will have time to focus on its own goals.

Best to each of you,  
Trudy

## THOMAS KIERNAN

CEO of the National Parks Conservation Association

### “The Future of Our National Parks”



Thursday, February 21st, 2008  
10:30am

Recreational Equipment  
(REI)

Downtown store auditorium  
222 Yale Ave N.  
Seattle, WA. 98109

### Save The Date!

#### EcoTips



**Easy ways to save money  
and save the planet:**

1. Change your light bulbs by switching to compact florescent bulbs where possible. You'll use 75% less energy.
2. Give appliances a good once over. If your refrigerator was installed before 1993 consider a new modern one which will use much less electricity.
3. Replace furnace filters regularly. And of course have a programmable thermostat.
4. Conserve water by keeping your plumbing in good repair... no drips! Leaky toilets can squander another 200 gallons a day!

*Next month look for ways you can save emissions  
by your driving habits.*

#### SGC Photography Committee

January 14th  
(Coffee: 9:30 am – Meeting: 10:00 am)  
Sis Woodside's home in Broadmoor

SGC PHOTOGRAPHY COMMITTEE (and other aspiring photographers) will meet at the home of Sis Woodside on January 14th (Monday) for a “practice” photography show within our committee. Photographer, Michele Burton, will be on hand to lead us in discussion of our photos and will also cover some technical aspects of photography, along with pointers for composition.

The assignment is to bring ONE recent photo that you have taken with a “Fall” or “Winter” theme.

IF you should choose to just come and observe (and absorb) helpful hints from Michele (or if you are not a member of the committee), feel free to do so.

PLEASE be sure to RSVP by Wednesday, January 9th, so that we can plan on our numbers. Questions?: Jane Harder (206) 361-7675.



# Conservation Report

We hope everyone enjoyed the Holiday Luncheon and Auction. I am including a partial list of items the Conservation Committee donated to help you and your guests learn more about good, green products we can all be using at home and in our gardens. Let me know if you would like me to email you the entire list.

**Tom's of Maine Natural, Whole Care Fluoride Toothpaste:** Good oral health with cavity prevention, tartar control, whitening, and clean, fresh flavor using only natural ingredients. Packaging is recycled and 10% of profits are donated to the community.

**Green Forest TP:** Made from 100% recycled paper which is whitened without chlorine bleach to help lessen impact on the environment. Green Forest supports environmental non-profit organizations and has a special partnership with Rivers Network to protect and restore rivers and their watersheds.

**People for Puget Sound Shopping Bag:** 100% cotton reusable bag with nylon straps so you won't need paper or plastic from the store anymore!

**Rubber Scraper:** To clean food waste from plates and straight into the yard waste where it can be composted into soil, keeping food out of the garbage disposal and then sewer where Metro must clean it back out!

**Ceramic Compost Keeper:** An attractive, white container to store egg shells, coffee grounds, food scraps and soiled paper, napkins, Kleenex, etc., before you take them to the yard waste bin for recycling. The lid has a charcoal filter to keep the ingredients odorless. A Home Composting Made Easy booklet is included.

**Ecover Dishwashing Soap:** An effective cleaner based on plant and mineral ingredients that uses the power of nature, not petrochemicals. It is highly biodegradable, safe for river and marine life and septic tanks. The label, bottle and cap are 100% recyclable.

**Natural Value Natural Waxed Paper:** This is a microwave safe, landfill safe, unbleached fiber, non-toxic when incinerated product that will not contaminate ground water! Do NOT use plastic wrap in your microwave! It releases toxins when heated!

**If You Care 100% Recycled Aluminum Foil:** This allows you to feel better about using foil for your storage needs but please remember to recycle when you are finished with the foil!

**Nalprene "Camelback" 500ml Water bottle:** A clear blue, washable (hand washing recommended), flip and sip, spill proof, easy to carry water bottle. Stop paying for more plastic bottles to be trucked to the store, driven home and then thrown away. Keep water with you in a reusable, easy container!

**Green Forest Paper Towels:** Made from 100% recycled paper whitened without chlorine, they are hypo-allergenic and microwave safe. Green Forest supports environmental non-profit groups and has a special partnership with River Networks which connect people to save rivers.

**BioBag Dog Waste Bags:** The world's first certified 100% biodegradable and 100% compostable pooper bag. Regular bags take over 100 years to degrade and are not compostable. These are BPI certified & use NO polypropylene in the production process.

**The Down to Earth Gardening Guide:** A guide to the natural and organic fertilizers, composts, soil amendments, and organic matter that feed the soil and stimulate plant growth. This company offers eco-friendly alternatives to traditional chemical fertilizers and soil amendments in an attempt to promote and support sustainable agriculture.

**Lawn and Leaf Garden BioBags:** These are biodegradable, compostable bags made from Mater-Bi, and are very valuable for consumers who seek to reduce polyethylene-based plastics in the environment. They are shelf stable, like paper towels, yet biodegrade quickly when exposed to nature's elements and micro-organisms. Bio-Bag products are based on starch, vegetable oil and other renewable sources.

**Many thank to my entire committee for all their contributions and great ideas. We hope you and your guests learned about many products that are healthier for us and our environment!**

**And please note:**

**www.greencars.org** To get green driving tips to help reduce the environmental impacts of automobile use! Your choice of vehicle is most important, but how you drive and how well you maintain your car, van, or light truck will also make a difference.



*Continued next page...*



## Conservation Report continued...

"A River Lost", a very important special report began running in the Seattle P.I. on November 26th. "Over the past 100 years, dredging, the creation of Harbor Island and discharges of human waste and industrial contaminants have dramatically affected the Duwamish River. Moreover, cleanup officials today don't even know the source of a lot of the pollution... We have systematically abused and negligently defiled the river that for millennia nourished Seattle's first people – and brought the city much of it's modern-day wealth." Read the three part Duwamish River series on the web at: [www.seattlepi.nwsourc.com/specials/duwamish](http://www.seattlepi.nwsourc.com/specials/duwamish). Robert McClure, P-I reporter wrote the main story and can be reached at 206-448-8092 or [robertmdclure@seattlepi.com](mailto:robertmdclure@seattlepi.com).

Was the disastrous flooding last week in Lewis County a result of increased clear-cut logging in the watershed creating landslides, and too much fill under extensive floodplain development in the cities, topped by a deluge of rainfall? Will they make changes to avert these disasters? Keep reading the news!

Sue Blethen, Conservation Chair

### HORT STARTS

#### Just a Few More Daffodil Facts:

**What's the difference between a daffodil and a narcissus?**

None. *Narcissus* is the Latin name and *daffodil* the English name for all of them.

**Then what about jonquils?**

Jonquils are only one part of the family, descended from the species *N. jonquilla* group.

**How many kinds of daffodils are there?**

Botanists differ; some say about 40 species, but including sub-species, maybe closer to 200. There are over 25,000 registered hybrids.

**Will squirrels or rodents eat the bulbs?**

No. Deer won't eat them either.

**How long will the bulbs last?**

The bulbs will probably outlive most of us.

**How long is the blooming season?**

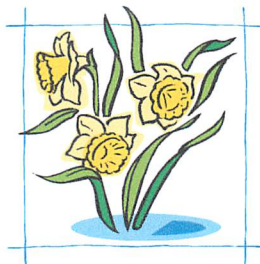
Depending on where you live, from 6 weeks to 6 months.

**Will they grow under ground covers?**

They will grow under shallow-rooted ground covers, like *vinca*, that require no additional summer water.

**Will they grow in all areas of the United States?**

Some cultivars will grow in most areas, but not all cultivars will grow everywhere.



### Early Snow

Amazed I looked  
out of the window and saw  
the early snow coming down casually,  
almost drifting, over

the gardens, then the gardens began  
to vanish as each white, six-pointed  
snowflake lay down without a sound with all  
the others. I thought, how incredible

were their numbers. I thought of dried  
leaves drifting spate and spate  
out of the forests,

the fallen sparrows, the hairs of all our heads,  
as, still, the snowflakes went on pouring softly through  
what had become dusk or anyway flung  
a veil over the sun. And, I thought  
how not one looks like another

though each is exquisite, fanciful, and  
falls without argument. It was now early  
evening. Some crows landed and tried  
to walk around then flew off. They were perhaps

laughing in crow talk or anyway so it seemed  
and I might have joined in, there was something  
that wonderful and refreshing  
about what was by then a confident, white blanket

carrying out its  
cheerful work, covering ruts, softening  
the earth's trials, but at the same time  
there was some kind of almost sorrow that fell

over me. It was  
the loneliness again. After all  
what is Nature, it isn't  
kindness, it isn't unkindness. And I turned  
and opened the door, and still the snow poured down  
smelling of iron and the pale, vast eternal, and  
there it was, whether I was ready or not:  
the silence; the blank, white, glittering sublime.

By Mary Oliver



# Flower Arrangers

## Christmas Lunch



*Ann Rogers and Anna Chestnut at the December Christmas Luncheon*

I would like to thank all who participated in the Christmas lunch, especially to the creative flower arrangers and the judges. The theme of interpreting an artists' style into a holiday floral arrangement produced the most amazing creations. The participants used a lot of thoughtful planning, skill and interpretative style to create these beautiful center pieces. The participants were Carol Henderson, Fay Page, Traci Tenneson, Shiela Noonan, Suzette de Turenne, Barbara Feasey, Catherine Allan, Juliet Romano, Marilee Ahalt, Vicki Neumann, Angela Clark, Prudence Hammett,

Debbi Wilson, Peg Wilton, Burnley Snyder, Pat Fitzgerald, Jo Anne Rosen, Molly Schneider, Christine Davis, Debbie Smith and Jeannine Foster.

The judges were JoAnne Rosen, Carol Henderson, Cathy Parker, Nancy Bain, Juliet Romano and Vicki Neumann. They were careful in the critiques to offer only constructive criticisms.

We are looking forward to March when Penny Horne will be giving a demonstration at the General Meeting followed by a Flower Arranging Workshop that afternoon. Please give me a call if you are interested in signing up as space will be limited. There will be a charge for the workshop but at this time the exact figure is unknown.



*Patsy Pattison and Judy Phillips with a Butterfly Arrangement by Traci Tenneson*



*Provisionals Christine Davis and Suzette DeTurenne*

## WREATH MAKING November 2007



*L to R: Judy Thomas, Catherine Allan, Susan Pollock*



*L to R: Susan Pollock, Charlee Reed, Judy Thomas*

The board ratified the Madrona Daylighting Project request for \$5,000 to provide native plants. *This proposal was unanimously passed by the Community Projects Committee.*

The board moved, seconded and approved to support the Arboretum Foundation's request for the "Demonstration Garden" in the Japanese Garden. *This proposal will be voted upon at the January Hort Meeting.*

## Correction to the Yearbook

1. page 62, **Mrs. Edward Hilpert**  
email should read: suehilpert@aol.com
2. page 62, **Mrs. Robert B. Foster**  
address and phone should read:  
9205 N.E. 22nd Place, Clyde Hill, WA 98004  
425-455-5788 phone and fax (no change to email address)



*Diana Neely, Sherrill Elliott and Barbara Shea  
at the Casey Tree Talk in November*

## Important Dates in January

- |         |   |
|---------|---|
| Jan. 7  | SGC Horticulture Meeting<br>CUH<br>9:30 coffee<br>10:00 Program: Fragrant Trees<br>Provisional speaker: Barbara Feasey  |
| Jan. 10 | SGC Board Meeting<br>Sunset Club<br>9:30 am - 11:30 am  |
| Jan. 14 | Photography exhibit and<br>presentation by Michele Burton<br>Home of Sis Woodside<br>9:30 am coffee<br>10:00 am meeting |
| Jan. 14 | Community Projects Committee<br>meeting<br>CUH, Isaacson classroom<br>10:00 am  |
| Jan. 15 | Membership Committee meeting<br>Sunset Club<br>10:00 am   |



**Seattle Garden Club**  
University of Washington Botanic Gardens  
Box 354115  
Seattle, Washington 98195-4115