

January 2017



The Seattle Garden Club

Member of The Garden Club of America



Please Join
Seattle Garden Club
Members

for our

Centennial Celebration
Luncheon
1917 ~ 2017

January 19th 2017
11:30 am
Seattle Tennis Club

Sheila Noonan
206-860-7662

Please RSVP to the invitation on your computer when you receive it from Paperless Post. Under the invitation there will be two boxes. One will say "Will Attend" and the other box will say "Will not Attend." Please click on the box you prefer.

If you do not see the invitation in your emails, check your junk mail. Paper invitations will be sent to those who receive snail mail. Sheila Noonan will answer any questions you may have. Her number is 860-7662

We will have a Past President's Table and a Honorary Members Table at this event.

We look forward to seeing all of you at this very special event!!!!

Let me know if you have any questions.
Hope Strobel, Centennial Chair

EVENTS AT A GLANCE

- | | |
|------|---|
| 1/5 | SGC Board Meeting, 10:00 am - 11:30 am, Sunset Club
SGC Nominations Committee Meeting, 11:30 am - 2:00 pm, Sunset Club |
| 1/9 | SGC Hort Meeting, 9:15 am - 11:30 am, CUH *Bring your own coffee cups
SGC Community Projects Meeting, 11:30 am, CUH Board Room
SGC Garden History and Design Committee Meeting, 11:30 am, CUH main room |
| 1/10 | SGC Policy and Planning Committee Meeting, 1:00 pm - 2:30 pm |
| 1/13 | SGC Conservation Meeting with Environmental Council, 10:00 am - 11:30 am |
| 1/19 | SGC Centennial Kickoff Luncheon, 11:30 am - 1:30 am, Seattle Tennis Club |
| 1/20 | Chuck Close Photography Exhibit, 10:30 am - 12:30 am, Henry Art Gallery, lunch to follow. Please RSVP to Jolie Roze |
| 1/23 | SGC Hort Committee Meeting, 1:00 - 2:pm, location TBA |
| 1/26 | SGC Nominations Committee Meeting, 10:00 am, location TBA
SGC Membership Committee Meeting, 10:00 am, location TBA |

From the President



1917 to 2017--Happy New Year and Happy Centennial Seattle Garden Club!

It feels as if we live in challenging times, but for the fun of it, google “historical events 1917” to see what our Founding Members were up against. (Imagine what they would have thought had they been asked to “google” something.) Some headlines from 1917: Albert Einstein publishes his first paper on cosmology; Houdini performs buried alive escape; Woodrow Wilson inaugurated for the second time; Russia thrown into chaos by Revolution and the abdication of Czar Nicholas II; and significantly, The US declares war on Germany and later, on Austria Hungary. Without question, the women who founded SGC were tested by their times. I look forward to learning more about the history of SGC throughout 2017, and in the meantime, like our founders, let's Garden On!

Hope Stroble and the Centennial Committee have worked over the last two years to put together a series of celebratory events. This has been no small undertaking. At last the time has come to experience the rewards of their remarkable efforts. First off is our Centennial Kickoff Luncheon at Seattle Tennis Club on January 19. Please plan on joining in (make your reservation!), and be sure to express your appreciation to Hope.

If you're thinking ahead to 2017 and New Year's Resolutions, why not check out Step Up, an initiative sponsored by the Conservation and NAL Committees of the Garden Club of America. This initiative, described on the GCA Webpage and in this newsletter, asks each of us to consider what we might do to Step Up to climate change. I am writing this newsletter in mid-December when both Paris and London are choking in heavy smog and their mayors are initiating emergency pollution measures. And yet Bill Gates has announced a new venture firm, Break Through Energy Ventures, which will invest \$1 Billion in new forms of clean energy. This heartening and encouraging news is exactly the kind of headline we need for 2017.

We shouldn't let 2016 pass by without one more thank you to Edie Tenneson and the Ways and Means Committee and Sheila Noonan of Meeting Arrangements for the spectacular and very fun Holiday Auction and Luncheon. I so enjoyed ringing in the holiday season with this lovely and highly successful event! And now, onward to 2017.

Peace and Goodwill to All,

Jenny

Holiday Luncheon & Auction



Arrangement by Sandy Hanower



Many thanks to our dedicated Ways & Means Committee!



Mary Turner and Jo Anne Rosen



The bidding begins!



Burnley Snyder playing Christmas carols



Karen Simmonds, Deborah Cheadle, Dabney Rohrbach and Sheila Noonan greet and register the guests

Holiday Luncheon & Auction



Lee Rolfe's arrangement



Edie Tenneson, Auction Chair



Rudolph stops in for a visit

It was ALL ABOUT RED at this year's fabulous Seattle Garden Club Auction and Luncheon. With the Sunset Club all decorated for the Holidays and our lovely: red-themed centerpieces adding pops of color throughout, it could not have been lovelier. The auction provided many opportunities for supporting SGC, and the early numbers show we have made over \$36,000 for Community Projects!

It takes all of us working together towards a common goal to have this event turn into a fun party and a successful fundraiser. Sheila Noonan did a tremendous job as Meeting Arrangements Chair, managing the reservations, assigning tables, planning the delicious lunch, and more! A huge thank you to our Auction Angels for their donations, to those who created and will host our wonderful experiences, to those who donated the many great auction items and certificates, and to all the volunteers who helped with set up, closings, and clean up.

This year we began using the Greater Giving software that allows us to do many tasks online such as procurement, reservations, sales, and check out. A big thank you to Patsy Pattison who got it all up and running, entered in the important initial information, and guided us throughout on how to best use this new way of running an event. Big thanks to Kim Bishop for coordinating the hardware along with Karen Simmonds, Deborah Cheadle, Dabney Rohrbach, and Shelley Rolfe for your assistance during the event by stepping up to enter the new frontier of data entry for SGC!

And of course a huge personal thank you goes out to the members of this year's Ways & Means Committee: Sheila Noonan, Marilee Ahalt, Candace Lancaster, Susan Potts, Charlee Reed, Barbie Snapp, Suzette de Turenne, Carlyn Steiner, Roxanne Wiley, Debby Smith, Burnley Snyder, Barb Peterson, and Sheila Wyckoff-Dickey. You gave me your kindness, encouragement, and advice, and you are all now my dear friends.

As is often the case we have spaces still open on quite a few of our experiences:

March 22 nd	Maxine Floral Demo	\$ 85	6 spaces
April TBD	Duplicate Bridge	\$ 50	2 spaces
May 10 th	Trip to Bloedel	\$100	7 spaces
May 11 th	Chase Garden Tour	\$ 75	3 spaces
May 23	Northern Corridor Tour	\$75	7 spaces
June 9 th	Old Goat Farm Tour	\$ 65	2 spaces
Sept. 30 th	Board Party at Bloedel	\$ 75	25 spaces

I will bring sign-ups to meetings or contact Edie Tenneson, Ways & Means Chair

ANGELS

THANK YOU to the many donors, volunteers and luncheon guests who have helped support our SGC Holiday Luncheon & Auction. Apart from those names and people who are more visible, we would like to thank those ANGELS whose monetary donations to our Angel fund as of the writing of this Newsletter also contribute significantly to our Community Projects. A big thank you to our wonderful 2016 Angels!

Laurie Ahern
Margi Allison
Barbara Anderson
Mary Jane Anderson
Phoebe Andrew
Alison Andrews
Trudy Baldwin
Kim Bishop
Barbee Crutcher
Christine Davis
Suzette de Turenne
Barbara Feasey
Janet Footh
Jeannine Foster
Jeannie Gravenkemper
Pam Green
Barbara Hamachek
Hotie Hard
Jane Harder
Mike Hayes
MaryEllenHughes
Janet Ketcham
Susan Moseley
Sheila Noonan

Catherine Parker
Patsy Pattison
Dinny Polson
Barbara Pringle
Kristie Ratzlaff
Victoria Reed
Dabney Rohrbach
Jo Anne Rosen
Barbie Snapp
Burnley Snyder
Carlyn Steiner
Dorothy Strong
Edie Tenneson
Faunie Valentine
Lyn White
Roxanne Wiley
Debbi Wilson
Peggy Wilton
Virginia Wright
Jennifer Wyatt
Ann Wyckoff



SGC Yearbook Changes

Change of Address:

Judy Phillips
1630 43rd Avenue East, Apt #303
Seattle, WA 98112
phone: 206-329-0770

New Email:

Ann Wyckoff
annw@apwyckoff.com

Please notify SGC's Corresponding Secretary Jolie Roze of any roster changes: jroze@comcast.net, 206-236-2218

Winter Walk

The holly bush, a sober lump of green,
shines through the leafless shrubs all brown and grey,
and smiles at winter, be it e'er so keen,
with all the leafy luxury of May.
And oh, it is delicious, when the day
in winter's loaded garment keenly blows
and turns her back on sudden falling snows,
to go where gravel pathways creep between
arches of evergreen that scarce let through
a single feather of the driving storm;
and in the bitterest day that ever blew
the walk will find some places still and warm
where dead leaves rustle sweet and give alarm
to little birds that flirt and start away.

John Clarke

Fun times at the luncheon



Megan Smith and Mary Turner



Alice Jean Lewis and Jane Yerkes



Marnie Roozen's arrangement



Candy Lancaster's arrangement



The Provisionals and Burnley playing in the background

*Special thanks to Peggy-Paige Most,
Jo Anne Rosen and Suzy Titcomb
for all their fabulous photos!*

GCA

This quarter's GCA Bulletin has an article featuring Cassandra Quave, winner of GCA's Chatham Fellowship in 2007. Her passion is ethnobotany, the study of plants and people. At the age of three her right leg was amputated due to a birth defect followed by a bacterial infection. This led her to focus on science at a young age and in college she was attracted to ethnobotany. One of her quotes caught my attention about her concern that botany departments are being eliminated. "Historically, botanists have played key roles in drug discovery, crop development, biodiversity conservation, and ecological monitoring. At a time when humankind is facing some of the biggest scientific hurdles, ranging from climate change, food and water insecurity, antibiotic resistance, and chronic disease, we need to train more botanists to contribute to these research efforts," according to Dr. Quave. Check out her article on page 43 in the GCA Bulletin. Her work is inspiring.

Plants do not need us to thrive; however, we could not survive without them.

Eve Rickenbaker



Hort Report

Our January Hort Meeting will take place on Monday, January 9th at CUH. **9:15 am Social & Hort Share & 10:00 am Program.** Provisional **Sue Simmons** will give a presentation on **Mason Bees**.

Hort Share: Hellebores, Sasanquas, a branch of Magnolia buds, some forced Quince, Forsythia, Hamamelis – what surprises do you have in your garden this time of year? Please bring a specimen (in a vase) to share from your garden that will expand our collective knowledge and provide inspiration for our own gardens. Baird Boards are a great idea if you have 5 cuttings to display. Thank you Betty Paul & Laurie Riley for organizing Hort Share!

Diana Ackerley, Horticulture Chair



*Sue Ashmun
(left) and
Marilee Ahalt
(right) with
their
arrangements*



*Kim Bishop our Chair of
Technology*

Gardener's Corner

Get in the Green

by Megan Smith

It's that time of year again. It's cold, dark and harder to get your groove on. We think we must hunker down for the long winter. But, it's for this reason that we should do the opposite. What our body really wants to do is to get moving! And... there's nothing better for your mood and your body than taking a walk in nature.

Scientific studies provide much evidence that going for a walk in nature reduces activity in the area of the brain that controls negative feelings. While other positive distractions can make a difference in our moods, being in nature has proven to have the greatest benefit. Being surrounded by nature also reduces our level of cortisol, the stress hormone, and activates our desire to exercise which, if done at a hardy pace, can produce those wonderful feel-good endorphins. Further, studies have proven that these nature walks decrease heart rates, blood pressure and the "fight or flight" response. New connections between brain cells are promoted and increases in the hippocampus (think memory) can be seen. Our immune system is actually strengthened and our body is restored.

Our connection to nature harkens back a long way. For 95 percent of our time on Earth, humans have been hunter-gatherers, foraging for food in the natural environment and hunting wild game. Foragers moved frequently setting up temporary camps depending on animal migrations and the ripening of various food sources. Humans were movers, surrounding themselves by nature day in and day out with senses that were adapted to interpret information about plants, streams and wildlife. We were then and still are one with nature.

So, having read this article I challenge everyone to go on a mindfulness walk. Pick an area in nature familiar to you, but that has some areas that are new and just walk, and walk, and walk some more. Clear your mind and try to enjoy being in the moment. You might just find you return home with that one brilliant idea you've been searching for and the best night of sleep you've had in a long, long time.

Seattle Garden Club Awards

The Awards Committee welcomes your input in the process of selecting Seattle Garden Club Members for awards which are presented to deserving members at our Annual Meeting each June. These awards can be GCA National Medals, Zone XII or Seattle Garden Club Awards. We also present community awards to non-members who have made significant contributions in Conservation, Horticulture, Photography or Civic Achievement. The processing of these awards takes time so we appreciate any suggestions from the membership as early as possible. To familiarize yourself with the awards, please read about them in the Yearbook (the green book) on pages 51-60. If you have suggestions or questions, please contact Sheila Noonan, Chairman, or any member of the Awards Committee. We look forward to hearing from you!



Debby Smith's arrangement

Floral Joy!



Arrangement by Laurie Riley



Arrangement by Ana Hergert



Arrangement by Sue Simmons

Paperwhite Potting Party at Susan Potts' Home



Dabney Rohrbach, Betty Paul and Edie Tenneson



Jane Coe, Sheila Wyckoff-Dickey, Sally Morbeck and Suzette de Turenne

Conservation Committee

The Conservation Committee asks you to bring your coffee cups on January 9th!

Conservation has three very important items to share this month. One is a reminder to attend our annual meeting with Washington Environmental Council to learn about key



environmental items we want to promote during the upcoming legislative session. Friday, January 13th at 10:00 - 11:30 am at the WEC offices on 3rd and Union. Coffee and treats provided. RSVP to Barbie Snapp - Conservation Chair, (araby1957@aol.com 206-910-1191)

I have included the first paragraphs of two important **GCA documents**, “Introducing STEP UP” and the “GCA Position on Climate Change”

INTRODUCING STEP UP

Offers steps we can take as a club and individually on how we can implement changes within our homes, committees and community

Climate change is one of the issues that will define the 21st century, and how we address this issue will historically define us. Our actions today will impact future generations in the centuries to come.

This year we are asking GCA Club Members to Step Up to climate change. Even the smallest steps can have an impact on the future habitability of the planet. We are asking you to help educate and activate your club members to respond to the changes in the environment.

Climate change covers many issues. As gardeners we need to learn about how climate change will affect plants and their pollinators, growing zones, water quality, soil erosion and local weather. As citizens, parents and grandparents we will want to explore what climate change will mean to our food supply, the economy, national security and human health.

Please read the full **Step Up** document by clicking here: http://www.seattlegardenclub.org/wp-content/uploads/2016/12/Step-Up-2016_2017.pdf

The second document is the **GCA position paper on Climate Change**, which clearly defines our goals at the national level and helps us understand the breadth of our efforts and influence across the nation. It highlights the fact that our efforts are much larger and reach farther than just our city, region or state, and that we are part of a national club that has a significant political history on the environmental and conservation stage.

GCA SUPPORTS STRATEGIES TO ADDRESS CLIMATE CHANGE

The Garden Club of America recognizes that the consequences of global climate change are affecting the natural world, our economies, national security, and human health. Because individual and collective action can modify the course of climate change, GCA is committed to educating members and communities about its causes and about constructive responses to them. GCA is particularly concerned about the influence of climate change on biodiversity. Native vegetation is the matrix that sustains plant biodiversity and supports wildlife and ecosystem services. Without plants, life on earth is not possible.

continued next page

Therefore, GCA is committed to encouraging action that preserves biodiversity. Please read the rest of our [GCA climate change position paper by clicking here](#), or visit our [SGC Website](#) and click on the "[Conservation Committee](#)" link located on left side of Member Home Page.

I ask you all to please take the time to read through these foundational documents. My hope is that they will provide a broader understanding of our scope of involvement on a national level, and act as an inspiration for us to become more involved in preserving our environment. With the new administration making clear that the preservation of our environment is not a priority, it is imperative that we become actively involved and stand strong for the protection of our environment.

Barbie Snapp, Conservation Chair

Photography Committee

Our Photography Auction item donated by Kathy Lea for six to fly on her seaplane to stay at her beautiful Lionel Pries designed vacation home on Lopez Island sold almost before the doors opened. Many of you on the photography committee have given me (Suzy Titcomb) your check for \$20. For those of you that haven't, please send a check to me so that we can make this event special.

Dec. 21st - Favorite Winter Solstice photo - Take a photo from your iPhone or any camera to show what you are doing on Winter solstice.

To submit a photo:

1) **Upload:** [Click on this link](#) and follow easy upload directions: <https://digitalgarden.smugmug.com/share/SGC2016to17MemberPhotos>

Note, if you use this feature, either follow the directions for adding you photo information in the gallery, or email your info to KimBishop1@aol.com

OR

2) Email the best file possible to, KimBishop1@aol.com with a full description in the subject line.

Jan 20th (NOTE THE DATE CHANGE) 10:30 am - 12:30 to go to the Henry Art Gallery to view the Chuck Close photography exhibit. and lunch at the Henry cafe. There will be a small fee for the tour depending on the size of the group. Please RSVP directly to Jolie Roze (jsroze@comcast.net)

Feb. 9th - CUH Board Room 10:00 am - 12:00 pm hear renowned Photographer Justin Reznick speak on how to capture a great photo. Many garden club members have been on his photo workshops and heard his lectures. We will have the opportunity to buy some of his work, as he will be doing his last art show this summer.

March - Stay tuned for a FUN hands on workshop to learn about entering photo shows, what judges are looking for and much more.

Suzy Titcomb, Photography Chair

A Photography Opportunity you **WON'T** want to Miss

Have you wanted to enter a photo show, but you were not sure if your photo met the criteria? Or maybe you love one of your photos but are not sure what the photo judges might say? Here is an opportunity to submit a photo or two and hear what the judges comments might be. Here is how it will work:

1. Bring either a landscape, seascape or cityscape, a close up or your favorite photo (8x10 color print) on Feb. 9th to the Justin Reznick workshop (see details in this newsletter) or to the Feb. 16th General meeting.

2. The SGC photography judges will make comments as they would in a GCA show.

3. On March 20th from 10-12 we will meet at CUH to review the photos and comments.

Close-up: a photo taken close to the subject or with a long focal-length lens to permit a close and detailed view of the object. The object fills most of the frame.

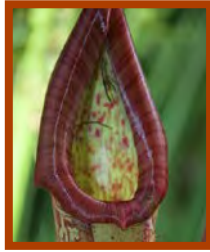
Landscape: a view of the scenery, of any kind from wilderness vistas to urban cityscapes, land or sea. Primary subject is the scenery and it must dominate although may contain secondary elements such as people, animals or objects. City elements predominate in cityscapes, sea predominates in seascapes.

Questions: Contact Suzy Titcomb stitcomb2@gmail.com

Looking Ahead

- | | |
|------|---|
| 2/2 | SGC Board Meeting, 10:00 am - 11:30 am, Sunset Club |
| 2/6 | *BRING YOUR COFFEE CUPS
SGC Provisional Meeting, 8:30 am - 9:30 am, CUH
SCG Hort Meeting, 9:15 am - 11:30 am, CUH
SGC Community Projects Meeting, following the Hort Meeting, CUH |
| 2/7 | SGC Policy and Planning Meeting, 10:00 am - 12:00 pm, location TBA |
| 2/9 | SGC Photography Meeting 'How to Capture a Great Photo,' 10:00 am - 12:00 pm, CUH Board Room |
| 2/16 | *BRING YOUR COFFEE CUPS
SGC General Meeting Annual Business Meeting, 9:30 am - 11:30, CUH
Fragrance Garden Work Party, 11:30 am - 1:30 am, CUH |

Correction from last month.
This photo was taken by
Dabney Rohrbach not Suzy
Titcomb.



GCA Encourages Use of Email

If you receive this newsletter via U.S. Mail and would like to receive it via email, please contact me. Please help us reduce waste and expenses.

Thank you!

Susan Brickman, Communications Chair

susanbrickman@msn.com

The Seattle Garden Club is a Member of The Garden Club of America



THE GARDEN CLUB of AMERICA



Seattle Garden Club

University of Washington Botanic Gardens

Box 354115

Seattle, WA 98195-4115