



# The Seattle Garden Club

Member of The Garden Club of America

## General Meeting

May 16, 2013

**Graham Visitor's Center  
Washington Park Arboretum  
Please note location!**

**9:30 am Social, 10 am Program**

Guests Welcome, Seating Limited



**Come meet Thatcher Bailey  
Executive Director of the  
Seattle Parks Foundation**

He will be giving us exciting news on the  
Foundation's current projects.

Information on current and past projects can be found  
at [www.seattleparksfoundation.org](http://www.seattleparksfoundation.org)

The Arboretum Board and Executive Director Paige  
Miller will provide all refreshments to thank SGC for  
our grant for the lookout building renovation

### **PLEASE RESPOND YES OR NO:**

Carol Eland, 206-324-5414 or  
[caroleland@msn.com](mailto:caroleland@msn.com)

## Hort Meeting

**May 6, 2013 UWBG/CUH**

**9:30 am Social, 10 am Program**

Provisional Peggy-Paige Most on Fruit Trees

## Events at a Glance

- 5/2/13 **Board Meeting**, Sunset Club, 10 am
- 5/6/13 **Provisional Meeting**  
UWBG/CUH, Boardroom, 9 am  
**Horticulture Meeting**  
UWBG/CUH, 9:30 am Social, 10 am Program  
**Horticulture Committee Planning Meeting**, Isaacson Classroom, Noon - 1 pm
- 5/9/13 **Auction item: Bloedel Photography and lunch**
- 5/13/13 **Auction Item: Chase Garden and Old Goat Farm and lunch**
- 5/14/13 **Judging Program Meeting**  
Diana Neely's, 10 am - Noon
- 5/16/13 **General Meeting**, Graham Visitor's Center, 9:30 am Social, 10 am Program, as noted on this page
- 5/19/13 **Auction item: Highlands Piano Concert and Dinner**
- 5/20/12 **Photography Committee Meeting**  
Suzy Titcomb's, 1 pm

**For More SGC Information and a Calendar of Events, Click on our Website:**  
[www.seattlegardenclub.org](http://www.seattlegardenclub.org)

**Please complete SGC's annual Membership Survey and Committee Signup sheet, included in this newsletter. This is your opportunity to provide input and choose areas of participation. Please turn your information in to Catherine Parker by May 10.**



## From the President

The months of May and September always seem so full, and this May is no exception. We have our last provisional talk of the year, Fruit Trees, by Peggy-Paige Most on May 6<sup>th</sup>. Our last regular General Meeting is May 16<sup>th</sup>, featuring the Executive Director of the Seattle Parks Foundation, Thatcher Bailey. Then, that evening we have the Iris Wagner Conservation Lecture, "We are all Connected," at the Seattle Aquarium beginning at 6:30 pm. Carol Eland and Juliette Romano are due a big round of applause for all their work on this event. Please get your tickets from Brown Paper Tickets if you haven't already. And consider inviting a member of the younger generation to the event. This subject is vital and relevant to us all.

Our treasurer, Sheila Noonan, and her Finance Committee have been hard at work crunching the budget numbers for next year. She is instituting some changes, which will better help us track our expenditures and define priorities. Thank you Sheila.

You will notice an announcement in this newsletter of several bylaw changes, which have been approved by your Board of Directors. These are mainly housekeeping changes, which further clarify the nomination process for several positions and designation of the Annual Meeting of the Membership and of the Board. Please note: this is your formal notification of these proposed changes and a call for approval will occur at the May 16, 2013 General Meeting.

Don't forget to fill out our yearly Membership Survey and Committee Sign up form, included in this newsletter. Please turn them in to President-elect Catherine Parker by May 10.

Do take time to get out in your own gardens, take a walk in one of our glorious public parks and put your face up to the sun. Spring is a busy, but such a rewarding time of year.

*Laurie Ahern, Club President*

## SGC Cocktail Party

**Wednesday June 26, 6 pm**



**Join the fun and celebrate the end of another wonderful SGC year while supporting our fundraising efforts!**

Mark your calendars for our special gathering at the beautiful home and garden of Diana Neely. Your SGC Board will host cocktails and sumptuous hors d'oeuvres while you mix and mingle with your friends and enjoy the lovely surroundings.

**Spouses and friends are welcome - \$75/person**

To make your reservation, please contact: Suzette de Turenne, [sdeturenne@comcast.net](mailto:sdeturenne@comcast.net) or 206-524-9042

## Community Projects

As Community Projects concludes its work this year, we can all reflect on our community and how it has been enhanced by Seattle Garden Club. As I learn all that our Conservation and Horticulture Committees are both doing and reporting on a national and local level, I am excited about opportunities for community projects in the future for SGC to continue to contribute to the fabric of life in our community. We can each think of the hundreds of people enjoying and benefitting from projects to which SGC has contributed: the Children's Playgarden, the Bloedel Reserve, the Olympic Sculpture Park's Vivarium, the Rose Garden at the Zoo, Lake Union Park, the Japanese Entry Garden, the SGC Fragrance Garden, and Bellevue Botanical Garden to mention just a few.

Please enjoy these community treasures and be proud of your efforts. The contributions of the Seattle Garden Club have indeed benefitted our community and its peoples.

*Eleanor Nolan, Community Projects Chair*

# Photography Committee

There will be a photography committee meeting on Monday, May 20<sup>th</sup> at Suzy Titcomb's house in Laurelhurst at 1 pm. Call Suzy for directions if necessary.



Mary Turner, Photography Committee Chair

Juliet Romano, Suzy Titcomb, Suzette de Turenne, Carolyn Kitchell and Sis Woodside on a photography snowshoeing outing

# Sante Fe Postponed

The Santa Fe Garden Trip scheduled for June 8-12 has been postponed until June 2014 with the hope that more SGC members can participate. Stay tuned for details in the future.

For those interested in visiting Santa Fe this July, The Santa Fe Garden Club hosts its 69th Annual Behind Adobe Walls tour on two Tuesdays, July 23 and July 30. Open to the public.

Laurie Riley

# WAYS & MEANS

As part of our Annual Holiday Auction & Luncheon we have several openings for a rare opportunity...

## OLYMPUS LUXURY COCKTAIL CRUISE JUNE 2, 2013

- A three-hour cruise with cocktails and appetizers aboard the *MV Olympus*, a 92' 1929 historic wooden vessel
- Includes an appearance by author David Dykstra, who wrote the book *Lake Washington 130 Homes*. David will give us the history of some of the beautiful homes and gardens on Lake Washington.

\$150/person - Please contact Suzette de Turenne, [sdeturenne@comcast.net](mailto:sdeturenne@comcast.net) or 206-524-9042

## Holiday Auction item, Tour of Kathy Fries' Garden



Deborah Cheadle, Megan Smith and Barbie Snapp undeterred by the rain



Kathy Fries (in orange) explains her cover crop to SGC tour guests

# In Perpetual Spring

Gardens are also good places to sulk. You pass beds of spiky voodoo lilies and trip over the roots of a sweet gum tree, in search of medieval plants whose leaves, when they drop off turn into birds if they fall on land, and colored carp if they plop into water.

Suddenly the archetypal human desire for peace with every other species wells up in you. *The lion and the lamb cuddling up.* The snake and the snail, kissing.

Even the prick of the thistle, queen of the weeds, revives your secret belief in perpetual spring, your faith that for every hurt there is a leaf to cure it.

Amy Gerstler



# Nominating Committee

The Nominations Committee is pleased to announce the following slate of officers which has been approved by the Governing Board and will be presented for vote by the active membership at our Annual Meeting on June 6, 2013, at Broadmoor Country Club.

President.....Catherine Parker\* (2013-2014)  
President-Elect.....Marilee Ahalt (2013-2014)  
Corresponding Secretary.....Marianne Kitchell (2013-2015)  
Community Projects Chair.....Carlyn Steiner (2013-2015)  
Conservation Chair.....Carolyn Kitchell (2013-2015)  
Program Chair.....Barbara Feasey (2013-2015)  
Membership Chair.....B.J.Anderson (2013-2015)  
Floral Design Chair (to fill one-year vacancy)  
.....Debby Smith (2013-2014)

\*The Office of President will not be included in the vote. As noted in our bylaws, the President-Elect from the preceding year automatically assumes the Office of President the following year. (See page B-12.)

Active members may nominate additional candidates as noted in the SGC yearbook. (See pages B-11 and 12.) Election shall be by 2/3 majority vote of the members present.

Respectfully submitted, The 2013 Nominations Committee:

Laurie Riley, Chairman, Marilee Ahalt, Charlee Reed, Barbara Anderson, Traci Tenneson

## April Hort Meeting Assembling Design Sculptures



Marilee Ahalt with her purchase in hand



Carolyn Kitchell and Carol Henderson check out the mechanics



Betty Paul and Megan Smith looking over the driftwood piece

## March General Meeting Flower Baskets on Display



Candy Lancaster's bucket of blossoms



Marilee Ahalt's colorful basket



Suzy Titcomb's floral bonnet

# Conservation Condensations

How important is our tree canopy for the release of oxygen and absorption of carbon dioxide? The goal of the city of Seattle is for 30% tree canopy by 2036. Currently Seattle's canopy is at 24%: the most canopy loss is from Seward Park, Laurelhurst and Windermere since 2009; the most gain is North Beach, Wedgwood and Highland Park. The majority (40%) of Seattle's canopy is not in our residential areas; it is on steep hillsides and public lands. Our trees are the lungs of our city. They are the "green" originals.

**Powerful Points:** Wind power now ranks among the cheapest energy sources. Unsubsidized costs of wind energy range from \$48-\$95 per megawatt hour. Coal taps out between \$62-\$141 per megawatt hour. We in the USA (according to the National Renewable Energy Laboratory) have enough windy land away from cities, suburbs and environmentally sensitive areas to produce nine times the total gigawatt hours of power we generated in 2011. Wind power is not perfect, but it is clean, and with every year, wind technology improves.

Once again, the Seattle Foundation offers matching grants on one day, May 15, for "GIVE BIG." Donations are made online, with a secure credit card site. What a great way to benefit our favorite conservation (and other non-profit) groups! [www.seattlefoundation.org/givebig](http://www.seattlefoundation.org/givebig)

On Saturday, June 1, Washington Environmental Council is organizing a Raingarden Tour in the Highland Park neighborhood with Highland Park Improvement Club (HPIC) and Sustainable Seattle. HPIC will be the "base camp" for the day's activity where we will have displays, informational tables, exhibits, hands on activities (for example, a mechanic to show where typical leaks occur in an engine and what can be done to fix the oil leak), raffles, food, etc. Concurrently, attendees can participate in a self-guided tour to the various raingardens in the area where homeowners, contractors and experts will be on hand to explain and answer questions.

"Plastics Unwrapped" is an exhibit at the Burke Museum, showing until May 27<sup>th</sup>, 2013. Since the 1950's, our world has embraced plastics as convenient and often beneficial. They have changed our culture. Plastics also change us when we throw them away. Take a trip to the Burke on the UW campus, enjoy our SGC "native garden" in front of the museum and wrap yourself in this provoking exhibit.

*Greenly giving, Hotie Hard, Conservation Chair*

Seattle Garden Club  
IN PARTNERSHIP WITH  
Seattle Aquarium  
PRESENTS

## The Iris Wagner Conservation Lecture



**Peter Seligmann**  
CEO of Conservation International

**ALONG WITH**

**Jean Enersen**  
King 5 News

Thurs. May 16, 2013  
**Seattle Aquarium**  
6:30 pm RECEPTION  
7:30 pm PROGRAM

TICKETS AT  
[brownpapertickets.org](http://brownpapertickets.org)  
FOR MORE INFO VISIT  
[seattlegardenclub.org](http://seattlegardenclub.org)

WILL DISCUSS

## We are all Connected!

A conversation on the connections between the health of Puget Sound, our planet, and people.

SEATTLE AQUARIUM THE HOME TEAM CONSERVATION INTERNATIONAL

**To Purchase Tickets for  
The Iris Wagner  
Conservation Lecture  
Click here:**

<http://iriswagnerlecture.brownpapertickets.com>

**Invite your Friends!  
Don't delay. We expect  
to sell out!**

Thursday, May 16, 2013  
6:30 pm Reception  
7:30 pm Program  
Seattle Aquarium

# Floral Design

Barbara Feasey is our "A Symphony of Flowers" Floral Design Show Chair (happening at the Annual Meeting on June 6th) and continues to keep it progressing forward. Currently, we have openings in all three of the classes and are encouraging entries. To enter, please contact Marilee Ahalt: [marilee.ahalt@gmail.com](mailto:marilee.ahalt@gmail.com) or 206-790-2921.

A Floral Design Workshop for "newer members" is scheduled for May 7th and will be given by Prudence Hammett. Prudence will give a power point presentation on the Principles and Elements of Floral Design, demonstrate an arrangement and instruct the participants on making an arrangement with the materials provided. We are thrilled to have Prudence come up from her new home in Bend, OR to do this workshop for us. At this time, most of the provisionals from classes 2009, 2010, 2011 and 2012 have signed up for the class! If you have any questions, please contact Marilee Ahalt.

*Marilee Ahalt, Floral Design Committee Chair*

## Introduction to the Judging Program

There will be a meeting for anyone in the club who may be interested in the GCA Judging Program at Carol Henderson's house on Wednesday, June 12, 10 am until noon. Page 41 in the Green Book lists all the judges in the three disciplines. If anyone is interested in the program, please confer with a judge in the discipline you are interested in joining. We hope you enjoyed the Photography Show on April 18<sup>th</sup>. The Horticulture and Floral Design Shows are at the June Annual Meeting. Please look at the exhibits and read the comments, as then you will have an idea of what happens.

We look forward to hearing from you! Any general questions can be addressed to Diana Neely: [diana\\_neely@msn.com](mailto:diana_neely@msn.com), or 206-605-4446.

See you with your Floral Design and Hort entries on June 6<sup>th</sup> at the Annual Meeting!



*This orchid is a Dendrobium kingeanum 'Jane Pepper' which won the GCA Certificate of Excellence at the Philadelphia Flower Show in March. The show was judged on three different days, and on the final day a panel of Chris Wilhelmsen, Arabella Dane and Diana Neely picked the winner.*

## Hort Report

We'll wrap up the last Horticulture meeting of 2012-2013 on Monday, May 6<sup>th</sup>, when we'll listen to Peggy-Paige Most deliver her talk on fruit trees. She's the last of seven Provisionals to give her presentation this year. The theme of trees has included a broad perspective on the subject, from the scientific aspects to the folklore of trees. We've learned interesting facts from each speaker, and they in turn have mentioned how much they've enjoyed the research.

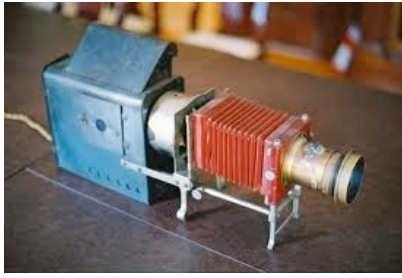
Please join us for a lively discussion in the Isaacson Classroom following Peggy-Paige's talk to plan next year's Horticulture meetings.

I look forward to another educational year in horticulture.

*Catherine Allan, Horticulture Chair*







# The Lantern Slides of The Garden Club of America

Most organizations and households share the conundrum of what to save and what to throw out. We wrap a treasured heirloom in newspaper and 50 years later it's the paper that's of interest. Alternatively, we throw out sketches of a budding artist who later blooms. It is a challenge that the archival holdings with its limited space at The Garden Club of America grapples with on a regular basis.

In 1964 the volunteer archival committee was greeted with a great surprise when a box of carefully wrapped lantern slides was discovered in the GCA's kitchen pantry! Lantern slides are glass slides projected onto a surface which allows the photograph to be viewed by a large group. They were used for educational lectures especially art and architectural history for nearly a century up until the 1950's. They can offer a softer and deeper tone than today's precise photography. The ones found at GCA showed early 20<sup>th</sup> century gardens, some of which are no longer, and all of which have grown and changed. Not only do they tell a history of gardening that could have been lost, but also are significant in the story of photography itself. It was an exciting moment back in that pantry. And eventually the slides were donated to the Smithsonian's Archives of American Gardens to which GCA remains closely tied.

*Carey Davis*

## The Gardener's Corner



### Reminders for May

- Weed and mulch before weeds go to seed.
- Harden off tender plants, flowers and vegetables before planting them outdoors.
- Fertilize roses with alfalfa meal or organic rose food. Watch for aphids on new growth.
- Be sure to feed container-grown plants at regular intervals...every two weeks with diluted solution.
- Fertilize rhododendrons and azaleas after bloom and remove flowers. Keep watered (not overhead) during the summer to ensure good flower bud set for next year.
- Fertilize lawn using a 3-1-2 ratio slow-release or natural organic formulation. Mow regularly, about once a week.

### The Latest Information about Coffee Grounds in Your Garden

Author and organic gardener Michael Nolan writes that coffee is an acidic drink, so it was thought that the coffee grounds would likewise be acidic. However they are close to pH neutral because the acid is washed out of the grounds when coffee is made. By volume they are about 2% nitrogen and are noted as a good source of nitrogen for composting. He suggests not adding the grounds directly to your garden unless you are using a nitrogen-rich fertilizer as well. Coffee grounds are not terribly acidic, and they are not a good direct soil additive without additional fertilizer. He encourages the use of coffee grounds as a great addition to compost where their nitrogen content can be fully realized and used. Local coffee shops are a good source for free coffee grounds!

*Janet Footh*

# Notice of Bylaw Revisions of The Seattle Garden Club

A vote on the following proposed bylaw revisions will occur at the May 16 General Meeting

## Article IV. Section 2.1

[Current bylaw]

**2.1 President.** The President shall preside at all General Membership, Governing Board, and Executive Meetings. She shall, with the approval of the Governing Board, appoint from the Active Membership: (1) the Chairman of the Nominating Committee and four Nominating Committee Members; (2) the Chairman of all Special Committees; (3) any ad hoc committee to serve as needed; (4) delegates to GCA Annual and Zone Meetings; (5) delegates for all other purposes – National or Community Meetings, etc. With the Membership Chairman, she shall select the Membership Committee Members.

## Article IV. Section 2.1

[Proposed bylaw]

**2.1 President.** *The President shall preside at all General, Governing Board, and Executive Committee Meetings. With the approval of the Governing Board, she shall appoint from the Active Membership: (1) a Chair for each Special Committee; (2) as needed, ad hoc committee chair(s) and members; (3) delegates to GCA Annual and Zone Meetings; and (4) delegates to other garden-related meetings.*

---

## Article IV. Sec. 3.2

[Current bylaw]

**3.2 Special and Ad Hoc Committees.** Special Committee Chairmen and Ad Hoc Committee Chairman, as the need arises, shall be appointed by the President with the approval of the Governing Board. Each Chairman shall report to the Board on a regular basis or as requested during her Chairship.

## Article IV. Sec. 3.2

[Proposed bylaw]

**3.2 Committee Chairs.** *Each Standing, Ad Hoc or Special Committee Chair shall report to the Governing Board at its monthly meetings or as the President may request.*

---

## Article IV. Secs. 3.3 (1) & (2):

[Current Bylaw]

1. Membership Committee. The President and the Membership Chairman shall select seven Members from the Membership to serve on the Membership Committee.

2. Nominating Committee. The President, with the approval of the Governing Board shall appoint from the Membership a Nominating Committee Chairman and four committee Members.

## Article IV. Secs. 3.3 (1) & (2)

[Proposed bylaw]

1. *Provisional Chair and Membership Committee.* *In consultation with the Membership Chair, the President shall select a Provisional Chair, who also shall serve as a member of the Membership Committee; and with the approval of the Governing Board, the President shall appoint six Active Members to serve on the Membership Committee.*

2. *Nominating Committee.* *The President shall invite the Immediate past President to chair the Nominating Committee; and, with the approval of the Governing Board, the President shall appoint four Active Members to serve on the Nominating Committee.*

---

OVER

---



# Continued: Notice of Bylaw Revisions

## Article IV. Secs. 3.3 (3) & (4) [Current bylaw]

### 3.3 Committee Membership

3. Members of Standing Committees. SGC Members select a committee or committees, from an annual signup sheet sent to the Membership, upon which to serve. The Chairman of the Standing Committee selects Members from the signup sheet to serve on the committee

4. Special Committees. The Chairman of the Special Committee selects Members from the annual signup sheets to serve on the committee.

## Article IV, Sec. 3.3 (3) [Proposed Bylaw]

*3.3 (3) Committee Membership. Signup sheets will be provided to SGC Members to use to express their committee preferences for the forthcoming year. The Chairs of both Standing Committees and Special Committees may select their committee Members from among those indicating an interest in their committee on the signup sheets.*

---

## ARTICLE VI GENERAL MEMBERSHIP MEETINGS

### [Current bylaw]

**Section 1. Annual Meeting.** There shall be an Annual Meeting of the Members, on a date to be specified by the Governing Board, at which the Members shall vote for Officers and Chairmen of the Standing Committees. At the Annual Meeting all election results shall be announced, Annual reports shall be made; the activities of SGC shall be discussed; awards shall be presented; and new Provisional and Active Members shall be introduced.

## Article VI. Sec. 1. [Proposed bylaw]

*Section 1. Annual Meeting. There shall be an Annual Meeting of the Members, on a date to be specified by the Governing Board. At such meeting, SGC Members shall vote for Officers and Chairs of Standing Committees; the election results shall be announced; awards shall be presented and the new Provisional Members shall be introduced to the Club.*

---

## Article VII, Sec. 1. [Current bylaw]

**Section 1. Annual Meeting.** There shall be an Annual Meeting of the Governing Board.

## Article VII. Sec. 1 [Proposed bylaw]

*Section 1. Annual Meeting of Governing Board. There shall be an Annual Meeting of the Governing Board, held in the Seattle region, within 45 days of the end of the SGC fiscal year.*

---END---

# SGC Membership Survey and Committee Signup 2013

**Please return this survey and committee signup by May 10, 2013, to Catherine Parker, 821 McGilvra Blvd East, Seattle, WA 98112.**

**This is your opportunity to give your input regarding your club and your participation. Please take the time to fill out all pages. Any questions, please contact Catherine Parker, phone: 206-799-8947 or email: [chparker3@gmail.com](mailto:chparker3@gmail.com). Thank you**

NAME: \_\_\_\_\_

Suggestions for:

General Meeting:

Horticulture Class:

Floral Design:

Photography:

Field Trip:

Would you be willing to share your garden for the September picnic (80-100 people)?

Would you be willing to open your garden to share with other garden club members?

Would you be interested in serving on the SGC Board or chairing a committee?

Which SGC Board position interests you?

Which Special Committee would you like to chair?

Would you like to be considered for a **Zone XII position**? Is there one that interests you most?

If you are interested in the **Judging Program**, please contact the current advisors:

Floral Design: Vicki Neumann 425-451-4311, [vsneumann@comcast.net](mailto:vsneumann@comcast.net)

Horticulture: Debbi Wilson 206-722-6394, [jwilson803@comcast.net](mailto:jwilson803@comcast.net)

Photography: Kathy Lea 206-367-3232, [klea2000@msn.com](mailto:klea2000@msn.com)

Suggestions for a **GCA Founders Fund** award in our area (a substantial monetary award for exceptional community projects):

Would you be interested in attending the **Shirley Meneice Horticulture Workshop?**  
**Or the National Affairs and Legislative Conference?**

Any additional comments or suggestions?

Please review your personal contact information in the Yearbook, and note changes below:

Any change of membership status should be directed to  
Hope Stroble, 158 NW Highland Dr., The Highlands, Seattle, 98177

# Standing & Special Committee Signups

**Members are encouraged to serve on two or more committees**

Name \_\_\_\_\_

## STANDING COMMITTEES (Board Position)

\_\_\_\_\_ Club Communications

\_\_\_\_\_ Community Projects

\_\_\_\_\_ Conservation

\_\_\_\_\_ Finance

\_\_\_\_\_ Floral Design

\_\_\_\_\_ Horticulture

\_\_\_\_\_ Meeting Arrangements

\_\_\_\_\_ Membership

\_\_\_\_\_ Photography

\_\_\_\_\_ Policy and Planning

\_\_\_\_\_ Program

\_\_\_\_\_ Ways and Means

## SPECIAL COMMITTEES

\_\_\_\_\_ Archives

\_\_\_\_\_ Awards

\_\_\_\_\_ Bylaws

\_\_\_\_\_ Garden History and Design

\_\_\_\_\_ Historian

\_\_\_\_\_ Nominations

\_\_\_\_\_ Scholarship

\_\_\_\_\_ School Gardens

\_\_\_\_\_ Speaker Endowment Funds

\_\_\_\_\_ Visiting Gardens

## Looking Ahead

6/2/13 **Auction Event: Olympus Luxury Cocktail Cruise**

6/6/13 **SGC Club Flower Shows**, "In Tune with Horticulture," "A Symphony of Flowers,"  
Broadmoor Golf Club, 7 am - 9 am passing; 9:15 am - 11 am judging; 11:30 member viewing

**Annual Meeting & Awards Luncheon**, Broadmoor Golf Club, 11 am - 2 pm  
11 am greet our new Provisionals; 11:30 Show viewing; Noon meeting and luncheon

6/12/13 **Introduction to the Judging Program**, Carol Henderson's, 10 am - Noon

6/13/13 **Incoming/Outgoing Board Meeting**, Sunset Club, 10 am - 1 pm

6/14/13 **Auction Event: San Juan Island with Eleanor Nolan**

6/18/13 **Auction Event: Whidbey Island Artsy Lunch and Garden Tour**

6/24/13 **Auction Event: Clam Digging and Lunch with Mary Jane Anderson**

6/26/13 **Auction Event: Board Cocktail Party at Diana Neely's**

## SGC Encourages us to Use Email

If you currently receive this newsletter via U.S. Mail and would like to receive it via email, please contact me. We are happy to reduce waste and expenses, in keeping with GCA policies. Thank you!

*Jenny Wyatt, Communications Chair*

[wyattjen@comcast.net](mailto:wyattjen@comcast.net)



### Seattle Garden Club

University of Washington Botanic Gardens

Box 354115

Seattle, WA 98195-4115