

January 2015



# The Seattle Garden Club

Member of The Garden Club of America

## General Meeting

January 15, 2015  
UWBG/CUH

9:30 am Social & 10:00 am Meeting

**Guests Welcome!**

**PLEASE RESPOND  
YES OR NO**

Jenny Wyatt, 206-322-2922 or  
[wyattjen@comcast.net](mailto:wyattjen@comcast.net)

## Local photographer, Justin Reznick, will showcase his work



Justin Reznick is a Seattle based professional nature photographer who credits his vision to years on the road and off the beaten path. He has explored 68 countries on 6 continents and hiked many of the world's greatest trails. Justin's passion for traveling and exploration has inspired new heights in his photographic abilities. His photographs have recently been published in *The Audubon Society*, *Backpacker Magazine*, *Nature's Best*, *Outdoor Photographer* and

*Photography Monthly* (a publication in the UK) and he is the author of several eBooks about photography. Justin's photography can be found at fine art shows throughout the Pacific Northwest and he frequently produces customized work for companies and individuals. His photo workshop and tour business, [Landscape Photo Tours](#), specializes in small, intimate group workshops, designed to provide the best possible experience for each of the participants. Justin is also honored to be the only American on staff as a tutor for the UK based tour company, [Light & Land](#), run by the legendary Charlie Waite.

## EVENTS AT A GLANCE

- 1/5/15 **Horticulture Meeting**, UWBG/CUH, 9:15 am Social, 10 am Program,  
Hosted by Floral Design Committee: Charles Coghlan, 'Asian Inspired Floral Design'  
**Community Projects Meeting**, UWBG/CUH, following Hort Meeting
- 1/6/15 **Policy & Planning Meeting**, home of Catherine Parker, 9:30 am,  
**Nominations Committee Meeting**, following Policy & Planning
- 1/8/15 **Board Meeting**, Sunset Club, 10 am
- 1/12/15 **Flower Show Meeting & Staging Meeting**, home of Diana Neely, 10:00 am followed by a Staging Meeting  
at noon at the Bellevue Botanic Garden
- 1/14/15 **Photography Committee**, Volunteer Park Conservatory shoot, 11 am - noon
- 1/15/15 **Horticulture Committee Meeting**, UWBG/CUH, 8:45 am - 9:50 am  
**General Meeting**, UWBG/CUH, 9:30 am Social, 10 am Program, as noted above  
**Shirley Meneice Meeting**, following the General Meeting, 11:30 am - 1:00 pm

Consult the calendar at the SGC website: [www.seattlegardenclub.org](http://www.seattlegardenclub.org)



## From the President

Welcome to 2015! This year will be a fabulous, full and fun year for our garden club! With the Northwest Flower Show in May and the Shirley Meneice Conference in September our members are actively helping to make our club shine to our greater community and other GCA clubs/members. I hope you have all updated your 2015 calendars with these dates, our General Meetings and our Horticulture Meetings. They can all be found on our new website under CALENDAR!

Thank you, to Dabney Rohrbach and Kim Bishop, for transforming our website to a new updated version! I encourage you all to go take a look and click around! If you have any questions, Kim Bishop is our website guru! Another thank you goes to Jo Anne Rosen who sends out the eblasts as requested. Communication is the key to keeping our club moving forward together! As a Mass Communication Major from UC Berkeley, this has been a priority for me. Please contact me via email or cell if you have any thoughts or concerns. Another way we receive your input is at the Annual Business Meeting, February 19. Please plan on attending as Suzette de Turenne and her Policy & Planning Committee are preparing for that meeting.

Finally, a huge THANK YOU to Roxanne Wiley, our Ways and Means Committee and Jenny Wyatt for putting together another lovely Christmas Luncheon and Auction!

*Marilee Ahalt, Club President*

## ANGELS

THANK YOU to all of the ANGELS, who have helped support our SGC Holiday Luncheon & Auction. These monetary donations contribute significantly to our Community Projects coffers.

As of this newsletter, the following are the 2014 Angels:

Marilee Ahalt	Dinah Hutchinson McCall
Barbara Anderson	Katherine Merrifield
Phoebe Andrew	Alex Morse
Alison Andrews	Susan Mosely
Nancy Bain	Sheila Noonan
Kim Bishop	Sally Nordstrom
Anne Bohart	Catherine Parker
Barbie Crutcher	Nancy Parker
Carey Davis	Gaye Pigott
Suzette de Turenne	Lindsay Price
Barbara Feasey	Barbara Pringle
Janet Footh	Vicky Reed
Jeannine Foster	Patsy Sangster
Jeannie Gravenkemper	Theiline Scheumann
Pam Green	Dorothy Strong
Barbara Hamachek	Lyn White
Hotie Hard	Roxanne Wiley
Julie Hooker	Debbi Wilson
Mary Ellen Hughes	Peggy Wilton
Gretchen Hull	Jenny Wyatt
Charlotte Hutton	Ann Wyckoff
Janet Ketcham	

## Floral Design Committee

Monday, January 5 at CUH

Charles Coghlan

“Asian Inspired Floral Design”

Social 9:15 am & Program 10:00 am  
Workshop for 24x, 11:15 am-12:30 pm  
(materials all provided for a \$25.00 fee)

To reserve your workshop spot email  
prior to December 31:

[candacewoodlancaster@gmail.com](mailto:candacewoodlancaster@gmail.com)





## SGC Holiday Auction



Once again, the membership of the Seattle Garden Club has risen to the occasion and made another SGC Holiday Auction a wonderful success. The final totals are not in yet, but it appears we have made over \$33,000 for all of our community projects!! This auction event comes together due to the incredible efforts of our many members: providing auction items and Angel donations, volunteering hours of service, attending and inviting guests, actively bidding and signing up for the many experiences offered throughout this next year. The Ways and Means Committee is so appreciative of all the many contributions from our members who make this happen.

We had a fun component added to the auction this year. Diana Neely and her volunteers collected plants from the Fragrance Garden and Sue Blethen and her volunteers contributed plants they propagated. This added a veritable garden in the corner of the dining room! A very special thank you is also due Patsy Pattison and her veteran crew who made the banking piece of this auction work yet again. Thank you, Jenny Wyatt, for organizing such a lovely luncheon!!

As is often the case, we have some spaces remaining for some of the events, which is a good thing for those who were unable to attend or didn't bring along their calendars for 2015. Look for these opportunities in upcoming newsletters and at our Hort and General Meetings OR contact me directly if you would like to sign up for any of the events below.

February 10 – FUN AND GAMES NIGHT AT CHRISTINE DAVIS' HOUSE - \$85/person

March 12 – “SYMPHONY OF THE SOIL”, FILM NIGHT AT CATHY PARKER'S HOME - \$75/person

April 20 – TOUR SEATTLE UNIVERSITY CAMPUS GARDENS WITH CISCOE MORRIS - \$75/person

May 19 – JAPANESE GARDEN TOUR AND LUNCH AT BLOEDEL RESERVE - \$75/person

May 27 – RHODODENDRON SPECIES GARDEN AND BONSAI COLLECTION TOUR & LUNCH - \$60/person

May 28 – SGC BOARD COCKTAIL PARTY AT VICKI REED'S HOUSE - \$75/person

June 11 – ART CLASS AND LUNCH WITH GAYLE HARRIS - \$110/person

July 14 – BASTILLE DAY AT HANSVILLE BEACH AT BARBIE SNAPP'S - \$80/person

July 16 – CLAMDIGGING AT MARY JANE ANDERSON'S - \$85/person

Sept 11-13 – METHOW VALLEY WEEKEND - \$300/person

Roxanne Wiley, Ways & Means Chair

[roxwiley@comcast.net](mailto:roxwiley@comcast.net) or 425-442-5152



*Beautiful smiles from  
Phoebe Andrew, Pam  
Green, Diana Neely  
and Candy Lancaster*





## Holiday Luncheon and Auction 2015



(top 4 photos, from top clockwise)  
Great Ways & Means Committee;  
Alison Andrews and guest Ann Hiner; Roxanne Wiley,  
Sheila Noonan, Angel Clark and Patsy Pattison;  
Vicki Reed, Pam Green, Diana Neely  
and Jenny Wyatt



(left to right) Barbara Feasey, Carol Henderson, Marilee Ahalt,  
Catherine Parker, Peggy Wilton and Nancy Bain



Sheila Noonan and Burnley Snyder

## Gardener's Corner

There was a time not so long ago when December meant the anticipated arrival of the famous Heronswood Nursery Catalogue. It was my favorite horticultural "read" of the year and I would salivate over each and every one of Dan Hinckley's erudite plant descriptions. While we no longer have the Heronswood Catalogue to look forward to, here are some exceptional books, websites, and blogs to nurture our horticultural longing this time of year.

*Practical Botany for Gardeners*, by Geoff Hodge, is a book divided into thematic chapters that's easy to read and beautifully illustrated. Did you know that the smell of cut grass is caused by volatile chemicals? Dip a toe into the science behind plants. Learn more and impress all your gardening friends after reading this book.

For any gardener interested in contemporary gardening, *Contemporary Designers' Own Gardens*, by Barbara Baker is a must read. It's incredible how each designer creates their own sense of place. Witness sophisticated genius level garden design at it's best. The website [buchholznursery.com](http://buchholznursery.com) and its Flora Wonder Blog are both superb. Talon Buchholz owns the amazing Buchholz and Buchholz Nursery where he propagates some of the most lovely woody plants in the Northwest. Talon is a prolific writer who channels a love of plants into his blog -- a treat every month!

And don't forget these great websites: [plantlust.com](http://plantlust.com), [crocus.co.uk](http://crocus.co.uk), [rhonestreetgardens.com](http://rhonestreetgardens.com), [xeraplants.com](http://xeraplants.com).

HAPPY READING!     *Megan Smith*

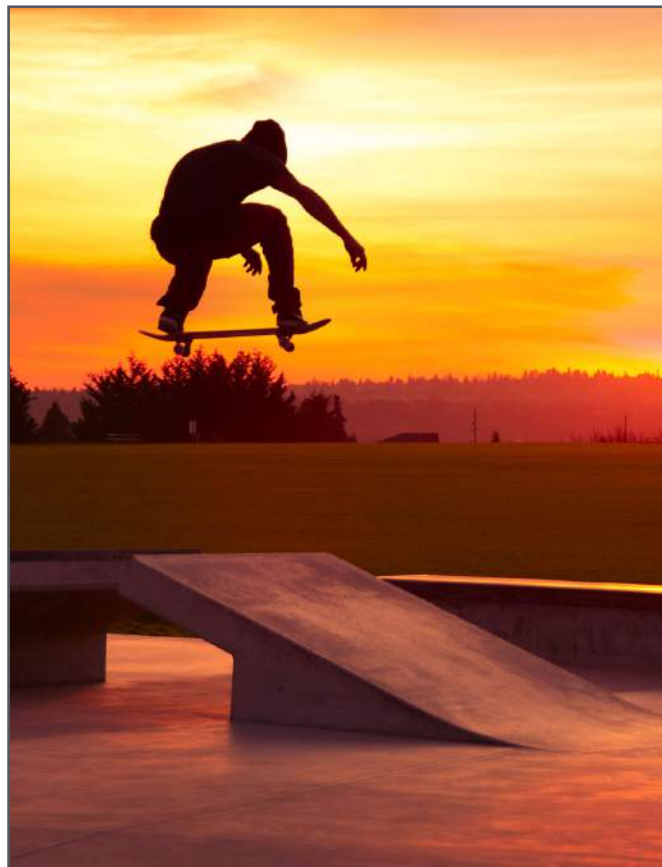
## Policy & Planning Committee

ANNUAL BUSINESS MEETING  
FEBRUARY 19, 2015

Policy & Planning has been very busy this year. One topic which affects us all, is our current system of having a one year Presidential term. After much discussion and review the committee has determined that at this time it is very effective and serves our needs well when coupled with our current practice of having a President Elect, who heads the Policy & Planning Committee, and having our immediate Past President as the optional head of Nominating. This does not preclude future changes to this plan.

Our SGC Business meeting is coming soon! We have asked Committee chairs to suggest topics that are important to them. We also invite YOU to suggest a topic that is important to you. Although Policy & Planning will ultimately be responsible for setting the program, we will try our best to address your topic either at the Annual Business Meeting or at our regular Committee meeting.

*Suzette de Turenne, P&P Chair*



*Jo Anne Rosen's Best of Show photograph  
'Skateboarder' from Zone VII's All Club Flower Show,  
"Shenandoah Valley"*



## Hort Report

In last month's newsletter, your Hort Chair thought we'd be safe from a freeze until the end of December - information she'd gleaned from the Farmer's Almanac. However, November 12, the day before we all received our December newsletter, she woke to find freezing temperatures had turned her tender, potted perennials into melted heaps; caused her rhody leaves to curl into narrow needles; and frozen her soil solid. Oops! Guess she'd better pay closer attention to the local weather forecasters! She hopes you didn't lose any treasures. We'll have to wait until spring, possibly even into summer, before we'll know the final damage tally.

Now we're heading into the shortest days of the year. And after that, ladies, it's a whole new gardening year to look forward to! The Flower Arranging Committee will run our January 5 meeting; the next Hort-run Meeting is February 2. Until then, my fingers are crossed that we don't have another showing of Frozen in our backyards.

*Deborah Cheadle, Hort Chair*

## Visiting GCA (almost)!

On a recent jaunt to New York City to visit my 20 something daughter, I walked by GCA headquarters. The building, standing at 14 East 60<sup>th</sup>, is impressive. Members are encouraged to visit here which has been home to GCA since 1998. Visitors are often greeted by an arrangement of fresh flowers, although artificial are acceptable. Framed around the walls are pieces from the valued collection of botanical prints. And the library, which began with a few books from founder, Elizabeth Martin, is substantial. In 1994, a section for archival holdings of the Club was opened for research and remains staffed by volunteers. Gone are the 1943 Underwood typewriters replaced by ever evolving technology. The offices are open 8:30 am to 4:30 pm weekdays. Members are encouraged to call beforehand, as four times a year the headquarters are closed due to meetings, which was sadly the situation in my case. So instead, I enjoyed GCA's Centennial garden beds several blocks away in Central Park. Although they may look dull to Northwest eyes in winter, they were a welcome site of caramel colored oak leaves, mottled sycamore bark and neatened beds around a flagpole. New York City's curious mixture of bustle and brown lawns is soothed by plantings or even the illusion of plants. I am sure it is dazzling when buzzing with blossoming bulbs in the spring.



*Carey Davis*



*Carolers  
singing &  
Karen  
Simmonds,  
Burnely Snyder  
with Stephen  
arranging!*





## Fragrance Garden Featured Plant

*Sarcococca hookeriana* var. *humilis* blooming in December in the Fragrance Garden!

One of 14 species of *Sarcococca*, which is very fragrant, frost hardy and a dwarf shrub. *Humilis* grows in West China. Blooming at the same time were the *Mahonia* and the *Viburnum x bodnantense*. Check the garden in January for when the *Edgeworthia* blooms!

Even bumblebees like our plants. Can you find him?

## Community Projects Five Projects for our Review

We are getting better known by our community! We have five grant requests; the names of the organizations and their planned uses for the funds are briefly summarized below:

**Burke Museum at the UW:** to support a new and completely revised edition of the *Flora of the Pacific Northwest*

**Green Plate:** to support garden education for an ethnically diverse group of children

**UWBC:** to support a renovation of the WPA Camellia Gardens to add light, remove trees that shade Camellia gardens and plant new varieties

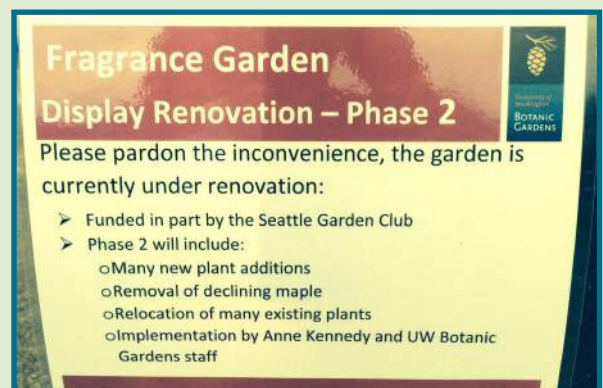
**Volunteer Park Trust:** to plant a bed near the lily ponds on the concourse in Volunteer Park (located west of the Asian Art Museum)

**Seattle Children's Hospital Foundation:** to support the Seattle Children's Organic Garden

The CP Committee has a big agenda this year. We will meet immediately after Hort in January, February and March. I hope anyone who would like to share their comments or opinions will contact me, right after the first of the year. If you would like to join the Committee, please let me know and we'll make it happen.

As you can see, Phase 2 is under construction in the Fragrance Garden.

*Carlyn Steiner, Community Projects Chair*



## Crocuses

They come  
by stealth, spreading  
the rumor of spring-  
near the hedge...  
by the gate...  
at our chilly feet...  
mothers of saffron, fathers  
of insurrection, purple  
and yellow scouts  
of an army still missing  
just to the south.

by Lind Pastan



## Zone XII Visiting Gardens Update

Garden Club of America Visiting Gardens is pleased to announce the following trips for 2015 & 2016.

Newport Rhode Island— June 18-23, 2015

Mississippi: Natchez and the Old South— April 10-15, 2016

The Gardens of Tuscany— May 3-13, 2016

If you are interested in any of the above trips, please place yourself on the interest list by emailing [gcainterestlists@gmail.com](mailto:gcainterestlists@gmail.com). Please include your name, address, telephone information, GCA club and the specific name of the trip.

Please visit the Visiting Gardens webpage on the GCA website for further information about what this dynamic committee has to offer!

Questions? Contact Laurie Riley [laurieariley@gmail.com](mailto:laurieariley@gmail.com) or Burnley Snyder [lottie7@aol.com](mailto:lottie7@aol.com)

## Northwest Passages Flower Show

### Registration Opens in January for Floral Design and Photography

Three cheers! The Schedule for Northwest Passages has been approved by GCA. The graphics design team of Sue Ashmun, Kim Bishop and Jolie Roze are putting the final touches on the Schedule. It is now on the Website! [www.seattlegardenclub.org](http://www.seattlegardenclub.org).



As Registration opens for each Division, fill out an entry form and contact the appropriate registrar. Online registration may also be available.

Photography —Registration opens January 5, 2015. Registrar: Suzy Titcomb, [sttitcomb2@comcast.net](mailto:sttitcomb2@comcast.net)

Floral Design—Registration opens January 12, 2015. Registrar: Sue Ashmun, [susan@ashmun.com](mailto:susan@ashmun.com)

Horticulture—Registration now open. Registrar: Catherine Allan, [jardinsroyaux@gmail.com](mailto:jardinsroyaux@gmail.com)

It's going to be a great Show! Mark your calendars for May 15 - 16, 2015, at the Bellevue Botanical Garden.

Please contact us with any questions you have. Onward we go!

Northwest Passages Co-Chairs:

Jenny Wyatt, [wyattjen@comcast.net](mailto:wyattjen@comcast.net)

Diana Neely, [diana\\_neely@msn.com](mailto:diana_neely@msn.com)



## East Montlake Park



*A beautiful fall day for a work party.  
(left photo) Thank you to Carolyn Kitchell, Candy Lancaster and Marianne Kitchell.  
(right photo) Sue Blethen, Sheila Wyckoff-Dickey, Marianne Kitchell and Candy Lancaster.*



**East Montlake Park** has had two very successful work parties this Fall. With amazing volunteer support, the blackberries and invasive weeds are cleared, plants overgrowing their placement have been moved to more appropriate spots, and almost all the propagated starts from January 2011 are finally incorporated into the park. It is looking so good right now, even as the first frosts hit! I hope everyone can take a little walk to appreciate all that has been achieved alongside the Montlake Cut (corner of E Shelby and E Park Drive E).

**Big kudos to our Fall volunteers:** Phoebe Andrew, Kim Bishop, Sheila Wyckoff-Dickey, Carolyn Kitchell, Marianne Kitchell, Candace Lancaster, Peggy-Paige Most, Betty Paul, Vicki Reed, Laurie Riley, Barbie Snapp, Debby Wilson, and me. Everyone pitched right in and made it happen!! Many, many thanks to you all for your continuing support as 54.5 hours were logged over the two month period!

Note: We do have some extra **Garrya elliptica 'James Roof'** which will be donated to the Christmas Auction if you are interested!! They are 12"-18" tall, were propagated in January 2011 by SGC members, and would be a beautiful addition to your garden!!

*Continued on next page*

## East Montlake Park

### A GCA Partner for Plants Project

Did you know we have never received a single dollar from the SGC? Individuals have donated to allow us to purchase plants for the park, but it has been the GCA Partner for Plants program (P4P) that has given us monies to hire goats to eat the invasives that over-ran the space, helped refurbish the sign that tells of our SGC involvement in the project, and paid for a specialist and supplies to allow us to propagate native plants to be planted at the park (total monies from P4P \$ 5,700).

We would love your input for additional ideas or native plants from your own garden to help fill East Montlake Park with plantings that enhance wildlife value along the Montlake Cut (a US Army Corps of Engineers requirement for the area of the park they manage). Take a walk in this beautiful little park to enjoy what all the volunteers have created over the 7 years of this project. Get ideas, look in your own garden to see if you have natives that could work at the park, and give us input! Our requirements are Native and with wildlife value (pollinator, food or habitat).

This area was initially a project begun in 1958 by ladies of the Seattle Garden Club as they beautified the Lake Washington Ship Canal, and then again from 1969-1971 as they established the Lake Washington Ship Canal Trail with the US Army Corps of Engineers (see page 67 in you green book).

Please send me ideas of more NW native plants we can include or let me know if you have plants to donate! Remember, we need to keep the park plantings low within 6-8 feet of the paths to keep the trails safe for everyone enjoying their beauty! More low growing plants that stay under 6' are needed!

Many thanks to all of you for your amazing involvement as we continue to restore this portion of East Montlake Park.

Sue Blethen [sueblethen@hotmail.com](mailto:sueblethen@hotmail.com)

### Floral Design at the Holiday Luncheon



*A lovely evergreen design by  
Karen Simmonds*



*Vicki Reed's centerpiece  
featuring vibrant amaryllis*



*Caroline Goedhart's tropical  
floral arrangement*



*Beautiful colors enhance  
Marilee Ahalt's design*





## Conservation Committee

### Did you know?

- About 27% of household water is used to flush toilets. At the Bellevue Botanical Garden, rainwater from the roof is used to flush the toilets during rainy months.
- Rain Gardens can be used in select locations to absorb and filter excess water (& chemicals such as zinc from tires) from roofs and parking lots.
- Rain Gardens help keep our streams, lakes and oceans cleaner. They can not be built in all yards or sidewalk planting strips however. For example, they are not recommended on hillsides.

### You too can help keep our streams and lakes cleaner:

- Avoid or minimize use of chemical pesticides or fertilizers in your yard.
- Fix oil leaks in your car.
- Don't pour anything toxic in a storm drain.
- Consider a rain barrel to help water your plants.
- Consider installing a rain garden (if you have a wet basement this may be a great idea!)
- Consider porous surfaces when you redo your driveway or patio.
- Clean up after your pet, especially near streams and lakes.

### You can conserve water (and save money):

- Water your yard in the hot dry summer months, less often but more deeply (2-3x/week).
- Water in the early morning when the sun won't evaporate the water as quickly.
- When installing irrigation systems use underground watering systems.
- Plant your yard with more drought resistant plants.
- Mulch in the spring (you'll need less water and need to weed less too!)
- Consider not watering your well established lawn-it will turn brown but usually will survive.
- When showering, hand washing, doing the dishes: Get wet, turn the water off, soap up and then turn the water on to rinse.
- Use a rain barrel to help water your pots, fill your vases and water your yard (not vegetable gardens due to roof chemicals).
- Use a carwash that recycles water.

*Carolyn Kitchell, Conservation Chair*

## Seattle Garden Club Awards

The Awards Committee welcomes your input in the process of selecting Seattle Garden Club Members for awards which are presented to deserving members at our Annual Meeting each June. These awards can be GCA National Medals, Zone XII or Seattle Garden Club Awards. We also present community awards to non-members who have made significant contributions in Conservation, Horticulture, Photography or Civic Achievement. The processing of these awards takes time so we appreciate any suggestions from the membership as early as possible. To familiarize yourself with the awards, please read about them in the green book on pages 51-60.

If you have suggestions or questions, please contact Laurie Riley, Chairman, or any member of the awards committee.

We look forward to hearing from you!

## SGC Yearbook Updates

Please make note of the following change(s)

New mailing address:

Mrs. Charles G.V. Stevens(Delphine),  
Provisional  
P.O. Box 683, Medina, WA 98039

New email address:

Mrs. Barbara Pringle  
Sustainer  
harpie1927@gmail.com

Please notify SGC's Corresponding Secretary,  
Marianne Kitchell, of any roster changes:  
[kitchell3@gmail.com](mailto:kitchell3@gmail.com), 206-325-2003



## Looking Ahead

**2/2/15 Horticulture Meeting**, UWBG/CUH, 9:15 am, Social 10 am Program  
Provisional Karen Simmonds' presentation 'The Lure of Flowers: Japan's Courtship  
of the Pacific Northwest', Hort Share-bring specimens in bottles  
**Community Projects Committee Meeting**, UWBG/CUH, following Hort Meeting

**2/5/15 Board Meeting**, Sunset Club, 10 am

**2/19/15 General Meeting**, UWBG/CUH, 9:30 am Social, 10 am Program.  
SGC Annual Business Meeting for members only



### GCA Encourages Use of Email

If you receive this newsletter via U.S. Mail and would like to receive it via email, please contact me. Please help us reduce waste and expenses.  
Thank you!

*Dabney Rohrbach, Communications Chair*  
[dmrohrbach@gmail.com](mailto:dmrohrbach@gmail.com)

The Seattle Garden Club is a Member of  
The Garden Club of America



THE GARDEN CLUB of AMERICA



**Seattle Garden Club**  
University of Washington Botanic Gardens  
Box 354115  
Seattle, WA 98195-4115

# PHOTOGRAPHY COMMITTEE

## Outings/Happenings



Photo credit:  
Sis Woodside

### OUTINGS:

**1/14/15** we will head up to the Volunteer Park Conservatory beginning at 11:00 am to shoot while staying warm and dry! If the weather is decent, the park has some other great places to photograph including the Water Tower.

**1/26/15** join us for a field trip beginning at 11:00 am to the Winston/Wachter Gallery to see the Robin Layton exhibit.

**\*\*Email Juliet Romano [jwromano2@gmail.com](mailto:jwromano2@gmail.com) for more information regarding the outings or if you want to join us.\*\***

### CHECK IT OUT!

Visit the new website to see examples of holiday photos from the Photography Committee. Next up: Winter photos from Volunteer Park.

### CONGRATULATIONS!

Suzy Titcomb has been admitted as a Candidate in the GCA Photography Judging program. Congratulations Suzy!